



SHERATON®



# POUR SOME HEART INTO YOUR HOME

**T**his guide to our collection of luxury kitchens will help you to dream, design and realise your perfect space. Where host and guest alike can indulge in the pleasure of good food, good wine, good company. If you're looking for opulence, for classic design built to last a lifetime, then you're in the right place.





# EVERY SHERATON KITCHEN COMES WITH SOMETHING WE'RE CONFIDENT YOU'LL NEVER USE.

Our kitchens are made for life. Not just that they last a lifetime, although our 20 year guarantee will assure you of that, but they're made to be lived in.

We guarantee that your kitchen cabinets will be free from defects in materials and workmanship, or else we'll repair or replace free of charge, for a full 20 years.

Plus we also cover your doors and selected accessories for 15 years, so you can enjoy your new kitchen knowing you're taken care of by our guarantee.

## 20 YEAR

**GUARANTEE**  
on all cabinets,  
hinges & drawer boxes



# CONTENTS

Sheraton Guarantee  
Inspired British Design  
Crafted for You

4  
8  
9

## IDEAS & ADVICE

### 10 KITCHEN COLOUR

How to use colour effectively.



### 12 TEXTURE V PATTERN

Contrast: where and how to use it.

### 14 MAKE YOUR MARK

Make your kitchen unique to you.



## KITCHENS

### 16 - 45 SHAKER



Neutral, classic lines allow for a world of personalisation. Every element performs its function elegantly, with traditional styling that has served families for generations.

### 46 - 69 TRADITIONAL



Bring the quiet pleasures of country life into your home. With elegant function and classic design, traditional kitchens offer versatility and homeliness.

### 72 - 121 MODERN



Contemporary design celebrates the dance of form and function, with inspired innovations that make modern family life a breeze.

### 122 - 141 HANDLELESS



With sleek lines and seamless forms, our handleless kitchens bring family life into the present and beyond.



### 146 - 149 DOOR COLLECTION

Tailor the style  
of your kitchen.



### 150 - 152 PAINTED OPTIONS

Complement your style with  
the perfect palette.



### 154 - 155 CABINETS

Choose your cabinet style  
and colour.

### 156 - 157 DRAWERS

Choose from three styles of  
GRASS® drawer boxes.



### 158 - 159 HANDLES

With 67 styles to choose from,  
you can really get a grip on the detail.

### 162 - 165 WORKTOPS

Match your worktops to the rest of your scheme.

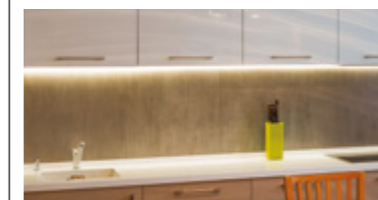


### 160 - 161 SINKS & TAPS

Modern and traditional  
centrepieces.



### 166 - 169 LIGHTING



From spotlights to strip lights  
to floating shelves, you'll find  
it all here.

### 142 - 184 OPTIONS

Design features **170** Organisation **174**  
Storage **176** Planning **180** FAQs **182**  
Index **183** Specification **184**

Our online visualiser is  
the first step in designing  
your dream kitchen.  
[sheratonvisualiser.co.uk](http://sheratonvisualiser.co.uk)





# INSPIRED BRITISH DESIGN

**B**ritish design is famous the world over. When you choose a Sheraton kitchen, you bring the best of British into your home. That's because our range of premium quality kitchens is built using the finest materials from around the world, manufactured right here at our purpose-built factory in the heart of Yorkshire.



# CRAFTED FOR YOU

**W**e craft each and every kitchen with love, skill and attention. Our rigid cabinets are made to order, using traditional glue and dowel construction and pressed together under controlled conditions. Meaning squarer, stronger cabinets with no visible screws or fixings. At our state-of-the-art Yorkshire production facility, our team of experts work with only the finest materials and components. The result is a range of kitchens we're proud to call our own. And we're sure you will be too.



**Good design should unite  
elegance and utility**

- Thomas Sheraton, British furniture designer





# KITCHEN COLOUR

When planning a new kitchen, your colour palette should be one of your first considerations. Effective use of colour can be the difference between a kitchen you like and a kitchen you love. We give you the choice of door, cabinet colour and worktop, allowing you to co-ordinate or contrast.

If your dream kitchen is a minimalist space then white is hard to beat, otherwise a subdued pastel will make a great foundation against which you can accent a bolder feature wall or worktop. When it comes to paint finishes, matt is better used for large areas but considered use of gloss can bring real elegance.



## PLUS 21 PAINTED DOOR COLOURS

To let you express your own unique style, a large selection of Sheraton kitchens are available in a range of 21 stunning, on-trend painted colours. See page 150 for more details.



## TEXTURE

Textures deepen and define a space. Natural woodgrains and fabrics will bring comfort, metals mixed with marble a contemporary feel. Make a feature of a tiled splashback or contrast a glossy finish with soft furnishings.

## PATTERN

As pattern seeking creatures, we take joy in finding and contrasting them. But only so far. As with patterns in music, there needs to be harmony for the effect to be pleasing. Use pattern sparingly in your kitchen with a few subtle contrasts, and they will sing.



# MAKE YOUR MARK

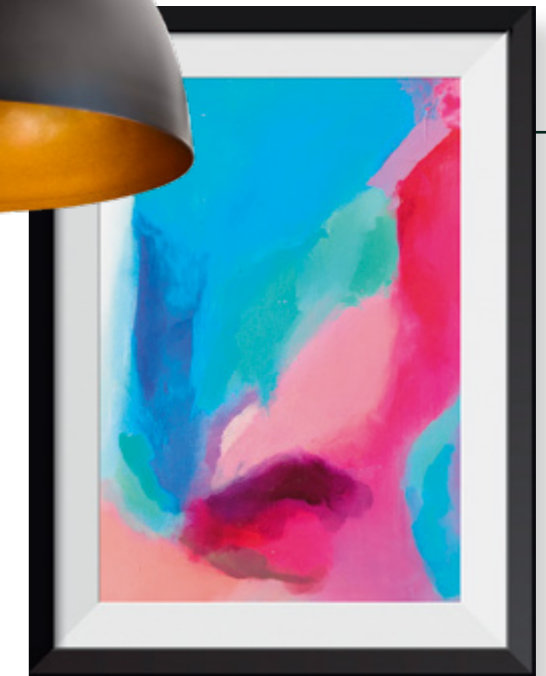
Your new kitchen is the room you'll spend most of your time in, so it needs to be as much an extension of yourself as it is a working space. We'll provide the units, fixtures and fittings to your specification. But the rest is up to you.

Choose your wall paint, appliances, accessories, art, soft furnishings and the like, in harmony with the kitchen you've created. Be bold and make it yours.



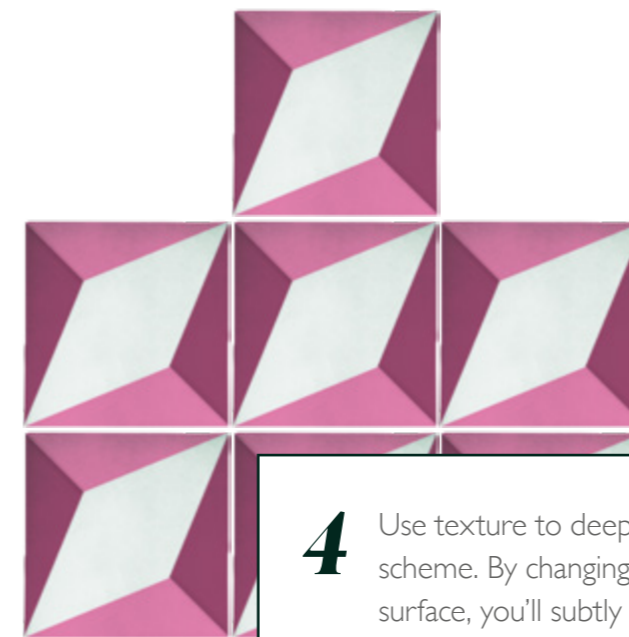
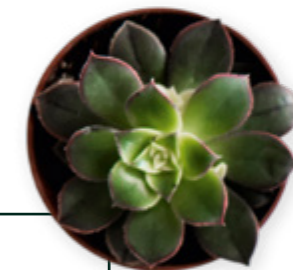
**1** Play with lighting, both natural and artificial. Use it to accentuate texture, to highlight colour, or as a feature in itself.

**2** Use accessories and artwork to bring bursts of colour that can easily be changed with shifting trends, or as your own tastes develop.



# ADDING MORE COLOUR

**3** An accent isn't an accent if there's lots of them. Pick a contrasting colour, use it sparingly. Then it'll pop.



**4** Use texture to deepen your colour scheme. By changing how light hits a surface, you'll subtly introduce a whole new set of shades to your palette.





**20**  
**YEAR**

**GUARANTEE**  
on all cabinets,  
hinges & drawer boxes



**S**implicity. That's the key when it comes to our Shaker range. We've drawn inspiration from the Shakers of New England, who made a virtue of minimalist living.

Neutral, classic lines offer you a world of personalisation. Every element performs its function elegantly, with timeless styling that transcends the trends.

Shaker kitchens revive traditional designs that have enriched family life for generations.



## THE RANGE

- Nouveau Painted Turquoise & Light Blue
- Nouveau White & Light Grey
- Shaker Painted Sage Grey & Ivory
- Ivory Shaker
- Savoy Painted Limestone & Anthracite
- Elegant Painted Light Grey
- In-Line Shaker Gloss White

- |           |                                     |           |
|-----------|-------------------------------------|-----------|
| <b>23</b> | Painted Wood Shaker Ivory & Hickory | <b>38</b> |
| <b>24</b> | Chamfered Shaker Painted Ivory      | <b>40</b> |
| <b>26</b> | Gloss Stone Shaker                  | <b>41</b> |
| <b>28</b> | Sand Oak Timber Shaker              | <b>42</b> |
| <b>30</b> | Lissa Oak Wood Shaker               | <b>43</b> |
| <b>32</b> | Broad Style Ivory                   | <b>44</b> |
| <b>34</b> | Lissa Oak Shaker                    | <b>45</b> |
|           | Sand Oak Shaker                     | <b>45</b> |



**i** Shakers used pegs to hang up chairs when not in use. See our space saving features on page 172.

# SHAKER

**S**imple is beautiful. Scandinavians call it Lagom – the Japanese have Shibui, meaning an appreciation of the beauty of silence and subtlety.

For the Shakers of New England, minimalism was a virtue. To craft something useful was considered a form of prayer. That's why our Shaker range strives to achieve beauty through inspired utility.





Light fittings don't always have to serve other aspects of your kitchen. They can make distinctive features themselves, from strip lights to spotlights to floating shelves.

SEE PAGE 166



**PAINTED COLOUR OPTIONS**

Available in a choice of 21 on-trend painted colours. You'll find our extensive colour palette on page 150.







**NOUVEAU PAINTED**  
TURQUOISE & LIGHT BLUE

Shaker door with a smooth painted foil wrapped frame and centre panel. For more options and accessories, see page 142.



**NOUVEAU**  
WHITE & LIGHT GREY

Shaker door with a smooth painted-effect finish. For more options and accessories, see page 142.

24

**SHAKER**

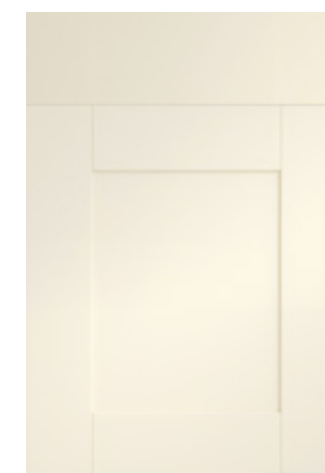
**NOUVEAU**



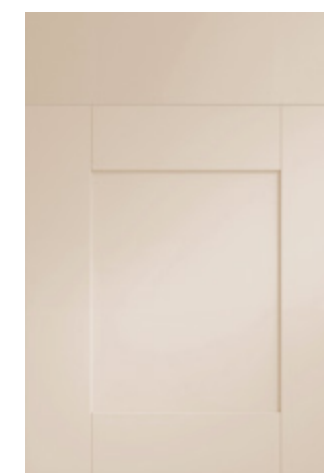
White



Light Grey



Ivory



Cashmere



**PAINTED COLOUR OPTIONS**

Available in a choice of 21 on-trend painted colours. You'll find our extensive colour palette on page 150.





**PAINTED COLOUR OPTIONS**  
Available in a choice of 21 on-trend painted colours.  
You'll find our extensive colour palette on page 150.

**SHAKER PAINTED**  
SAGE GREY & IVORY

Shaker door with a painted foil wrapped frame and centre panel with a woodgrain finish. For more options and accessories, see page 142.





**IVORY SHAKER**

Shaker door with an ivory woodgrain effect finish  
For more options and accessories, see page 142.





**PAINTED COLOUR OPTIONS**  
Available in a choice of 21 on-trend painted colours.  
You'll find our extensive colour palette on page 150.

**SAVOY PAINTED**  
LIMESTONE & ANTHRACITE

Shaker door with a recessed handle in a smooth painted finish.  
For more options and accessories, see page 142.





**PAINTED COLOUR OPTIONS**  
Available in a choice of 21 on-trend painted colours.  
You'll find our extensive colour palette on page 150.

**ELEGANT PAINTED**  
LIGHT GREY

Shaker door with a smooth painted frame and centre panel.  
For more options and accessories, see page 142.









# WE WORK BETTER UNDER PRESSURE

All our cabinets are perfectly pressed together under controlled conditions so they're squarer, straighter and stronger. Which, in turn, means they fit better, last longer and are more than ready to take what everyday life throws at them.

# NOTHING TO SEE HERE

All our cabinets are made to order, using a glue and dowel construction which leaves no visible screws or fixings. The only holes we drill are custom to your specification, resulting in a flawless finish inside and out.







**PAINTED COLOUR OPTIONS**  
Available in a choice of 21 on-trend painted colours.  
You'll find our extensive colour palette on page 150.

**PAINTED WOOD SHAKER**  
IVORY & HICKORY

Shaker door with a painted solid timber frame and veneered centre panel.  
For more options and accessories, see page 142.



## SHAKER



### CHAMFERED SHAKER PAINTED IVORY

Shaker door featuring chamfered edges, with a painted solid ash frame.  
For more options and accessories, see page 142.

40



**PAINTED COLOUR OPTIONS**  
Available in a choice of 21 on-trend painted colours.  
You'll find our extensive colour palette on page 150.



41

### GLOSS STONE SHAKER

Shaker door with a gloss stone finish.  
For more options and accessories, see page 142.



## SHAKER



### SAND OAK TIMBER SHAKER

42

Shaker door with a timber frame and veneered centre panel in a Sand Oak finish. For more options and accessories, see page 142.



43

### LISSA OAK WOOD SHAKER

Shaker door with a solid oak frame and veneered centre panel in a Lissa Oak finish. For more options and accessories, see page 142.



**SHAKER**



**BROAD STYLE  
IVORY**

Shaker door with a matt ivory finish.  
For more options and accessories, see page 142.



**LISSA OAK SHAKER**

Shaker door with a Lissa Oak woodgrain effect finish.  
For more options and accessories, see page 142.



**SAND OAK SHAKER**

Shaker door with a Sand Oak woodgrain effect finish.  
For more options and accessories, see page 142.



# TRADITIONAL

**O**ur Traditional range embodies the quiet joy of country living. Binding natural textures with organic hues, our hallmark range brings the rolling countryside into your home.

These are spaces for family gatherings, hearty food, birdsong and the morning paper.

Picture slow cooked winter stews or summer evening cocktails with friends.

The subtlety of a traditional kitchen means your personal touches will sing. With elegant function and classic design, they're the perfect place to start.

## THE RANGE

- Harmony In-frame Shaker Indigo Blue, Sky & Slate **50**
- Manor House Painted Heather, Slate and Light Grey **54**
- Flute Ivory **56**
- Edwardian Painted Light Grey **58**
- Minster Painted Graphite & Slate **60**
- Character Painted Cashmere **64**
- Wood Framed Ivory **66**
- In-Line Painted Light Blue & White **68**
- Regent Ivory **69**

**20**  
**YEAR**

**GUARANTEE**  
on all cabinets,  
hinges & drawer boxes





# CARRYING THE MANTEL

Since Prometheus stole fire from the Gods it's been keeping us alive. We liked it, so we brought it inside. Then we decorated around it to show it off. We sang songs about burning rings and Norwegian wood. Then at some point, we stopped needing it. But we missed it, so we kept the surround, kept decorating it and passing it down through the years. These days you can have one over your cooker, so when you spark the hob up it takes you back to where it all started.

Thanks Prometheus.



## ALL OF OUR PAINT IS GREEN.

Every single one of our meticulously selected range of 2l paint colours is water-based. That means they don't crack, and they last longer without fading. But above all they're far better for the environment. Everyone's a winner.





TRADITIONAL



Sinks can be dramatic focal points in their own right. Ceramic farmhouse sinks bring a touch of the rustic, where metallic units align more with contemporary style. Take a look at our full range of sink options. **SEE PAGE 160**

**PAINTED COLOUR OPTIONS**  
Available in a choice of 21 on-trend painted colours.  
You'll find our extensive colour palette on page 150.





**HARMONY IN-FRAME SHAKER**  
INDIGO BLUE, SKY & SLATE  
In-frame shaker door with a smooth painted finish.  
For more options and accessories, see page 142.



TRADITIONAL

**PAINTED COLOUR OPTIONS**  
Available in a choice of 21 on-trend painted colours.  
You'll find our extensive colour palette on page 150.

**MANOR HOUSE PAINTED**  
HEATHER, SLATE AND LIGHT GREY  
Shaker style door featuring an inner beading with a painted solid timber frame  
and veneered centre panel. For more options and accessories, see page 142.





**FLUTE  
IVORY**

Square framed door with a grooved centre panel in a smooth ivory finish. For more options and accessories, see page 142.



TRADITIONAL



**PAINTED COLOUR OPTIONS**  
Available in a choice of 21 on-trend painted colours.  
You'll find our extensive colour palette on page 150.

58

**EDWARDIAN PAINTED  
LIGHT GREY**

In-frame effect door in a smooth painted finish.  
For more options and accessories, see page 142.





**MINSTER PAINTED**  
**GRAPHITE & SLATE**

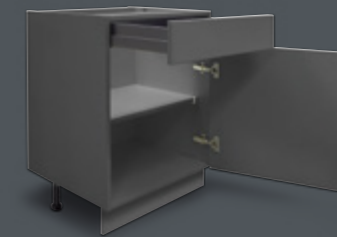
Shaker style door featuring an inner beading in a smooth painted finish. For more options and accessories, see page 142.





# SOFTLY, SOFTLY.

We are the only kitchen manufacturer to use GRASS® Tiomos hinges with easy adjustment and simple safety features. With a soft close this smooth, you could find yourself opening a door just to enjoy watching it close.



# GOING GREY GRACE- FULLY.

Graphite cabinets can be matched with graphite frontals, drawers and wirework for a fully coordinated look.

Go to page 176 to view our clever storage solutions in graphite.





**PAINTED COLOUR OPTIONS**  
Available in a choice of 21 on-trend painted colours.  
You'll find our extensive colour palette on page 150.

**CHARACTER PAINTED  
CASHMERE**

Solid timber painted square framed door with a raised centre panel.  
For more options and accessories, see page 142.





**PAINTED COLOUR OPTIONS**  
Available in a choice of 21 on-trend painted colours.  
You'll find our extensive colour palette on page 150.

66

**WOOD FRAMED**  
IVORY PAINTED

In-frame door featuring a painted solid ash frame and veneered centre panel.  
For more options and accessories, see page 142.





**IN-FRAME PAINTED**  
LIGHT BLUE & WHITE

In frame door featuring a foil wrapped painted woodgrain finish. For more options and accessories, see page 142.

**68**



**PAINTED COLOUR OPTIONS**  
Available in a choice of 21 on-trend painted colours. You'll find our extensive colour palette on page 150.

**69**

**REGENT**  
IVORY

Square framed door with a raised centre panel in a smooth Ivory finish. For more options and accessories, see page 142.



A woman with blonde hair, wearing a light blue shirt and a yellow apron, is smiling as she watches two young children bake. The children, a boy in a red shirt and a girl in a striped shirt, are both wearing aprons and are focused on decorating small round cookies on a baking tray. The cookies are topped with raspberries and chocolate chips. In the background, there is a kitchen counter with various items, including a large brown ceramic bowl and a glass jar. The overall atmosphere is warm and joyful.

HAPPINESS  
~ IS ~  
HOMEMADE



# MOD -ERN

Contemporary kitchen life opens doors for those who want to bring the theatre of professional cheffing into their own home. Central islands and bar spaces become areas of performance, as friends and family wonder at the alchemy of cookery.

Our modern kitchens celebrate the dance of form and function, with inspired innovations that make enjoying the magic of cooking easy. And if you're more the reflective type, our sleek minimalist styling options will help you to find your peaceful haven.

**20**  
**YEAR**

**GUARANTEE**  
on all cabinets,  
hinges & drawer boxes

## THE RANGE

Autograph Painted Blush & Indigo Blue	78
Lustre Metallic & Cube Fjord	82
Cube	84
In-Line Gloss Light Grey	86
In-Line Gloss Cashmere	88
In-Line Gloss White	90
In-Line Gloss Limestone	92
In-Line Gloss Anthracite	93
In-Line Gloss Grey	94
In-Line Gloss Ivory	95
In-Line Painted Ivory & Sage Grey	96
Mattonella Gloss Light Grey	100
Mattonella Gloss Cashmere	102
Mattonella Gloss White	104
Setosa Painted Ivory & Green	106
Woodgrain White Oak	108
Woodgrain Sand Oak	110
Woodgrain Gladstone Oak	113
Embossed Ivory & Truffle	114
Crystal Gloss Limestone	116
Crystal Gloss Ivory	118
Bellato Grey	120
Satin White	121



# HERE'S TO THE 'ISMIS'.

**M**odernism in its various strands gave us cubism, surrealism, post-impressionism, the list goes on (and on).

Appearing at the turn of the 20th century, the modernists believed in simplified forms, streamlined functionality and the reconciliation between manufacturing and the individual artistic spirit. Just like us.

So if you're after a little 'ism', you'll find it right here, in one of our modern kitchens.





MODERN



**AUTOGRAPH PAINTED**  
BLUSH & INDIGO BLUE

Slab door with a recessed handle in a smooth painted finish.  
For more options and accessories, see page 142.

78



**PAINTED COLOUR OPTIONS**

Available in a choice of 21 on-trend painted colours.  
You'll find our extensive colour palette on page 150.



**F**inishing touches make all the difference.  
Contemporary taps will help tie your  
modern scheme together.

**SEE PAGE 161**







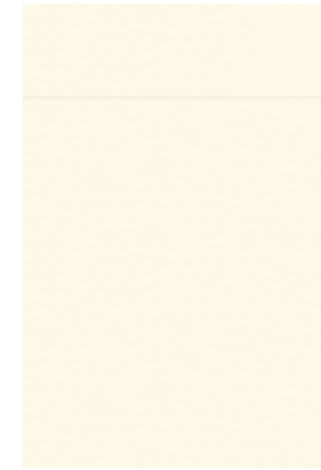




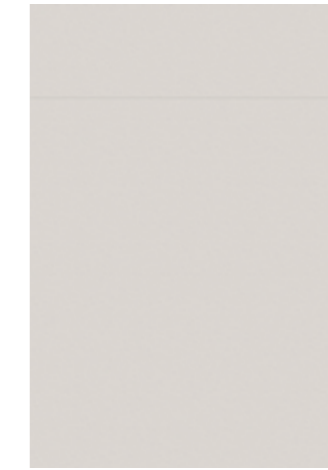
**CUBE**

Slab door in a smooth finish.  
For more options and accessories, see page 142.

**CUBE DOORS**



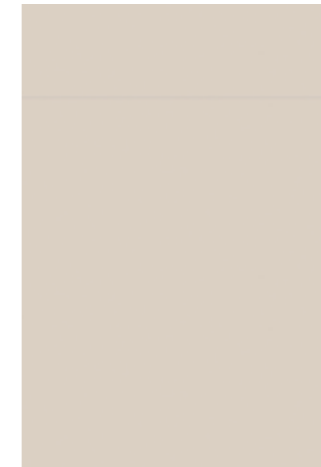
Ivory



Light Grey



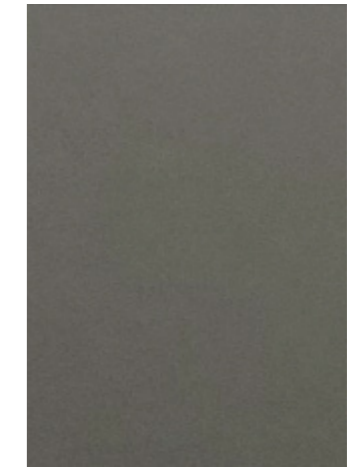
Limestone



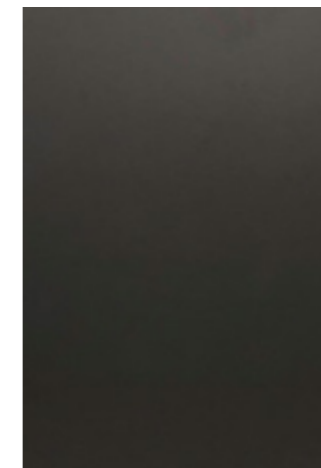
Cashmere



Fjord



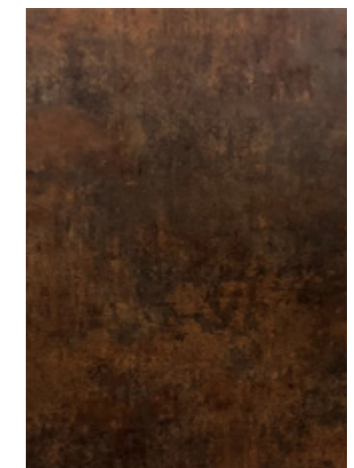
Dusk Grey



Graphite



Dark Blue



Copper





**IN-LINE GLOSS**  
LIGHT GREY

Gloss lacquered door in a light grey finish with an integrated pull handle. For more options and accessories, see page 142.



MODERN







**IN-LINE GLOSS**  
WHITE

**90**

Gloss lacquered door in a white finish with an integrated pull handle. For more options and accessories, see page 142.



**MODERN**



**IN-LINE GLOSS**  
LIMESTONE

**92**

Gloss lacquered door in a limestone finish with an integrated pull handle. For more options and accessories, see page 142.



**93**

**IN-LINE GLOSS**  
ANTHRACITE

Gloss lacquered door in an anthracite finish with an integrated pull handle. For more options and accessories, see page 142.



**MODERN**



**IN-LINE GLOSS**  
GREY

**94**

Gloss lacquered door in a grey finish with an integrated pull handle. For more options and accessories, see page 142.



**95**

**IN-LINE GLOSS**  
IVORY

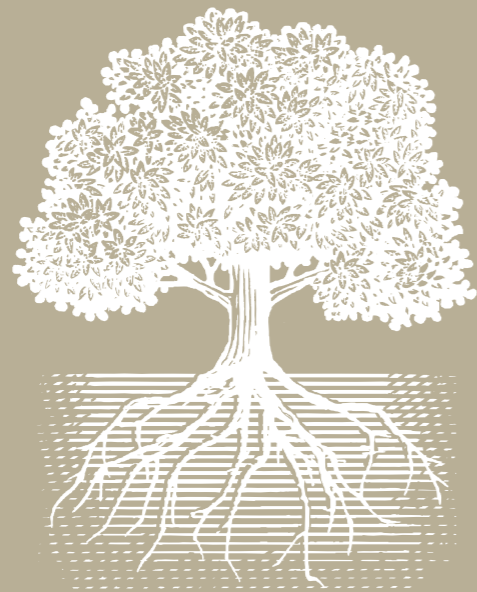
Gloss lacquered door in an ivory finish with an integrated pull handle. For more options and accessories, see page 142.





**PAINTED COLOUR OPTIONS**  
Available in a choice of 21 on-trend painted colours.  
You'll find our extensive colour palette on page 150.





---

## WE SEE THE WOOD FOR THE TREES.

---

Yes we focus intensely on the tiny details of your new kitchen, but that doesn't mean we forget the bigger picture. All our wood is sourced from responsibly managed forests, and, because of this, we've been awarded the FSC® Chain of Custody Certification.



# 3,927

## WAYS TO MIX & MATCH

---

**17**  
DOOR  
STYLES

---

×

**21**  
PAINTED  
COLOURS

---

×

**11**  
CABINET  
COLOURS

---

See more on page 150.



MODERN



100

**MATTONELLA GLOSS**  
LIGHT GREY

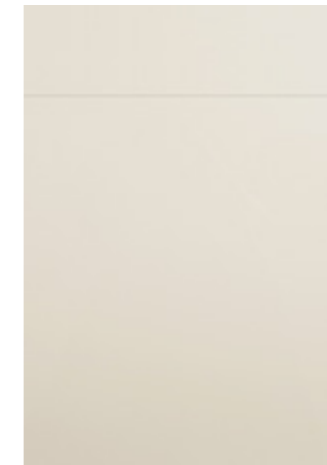
Slab door in a gloss light grey finish.  
For more options and accessories, see page 142.



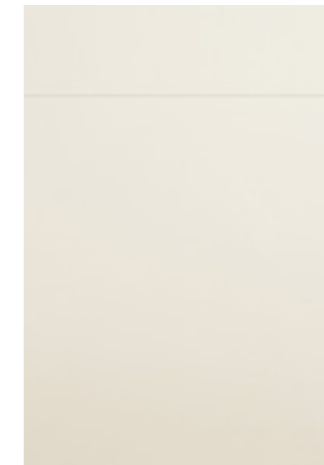




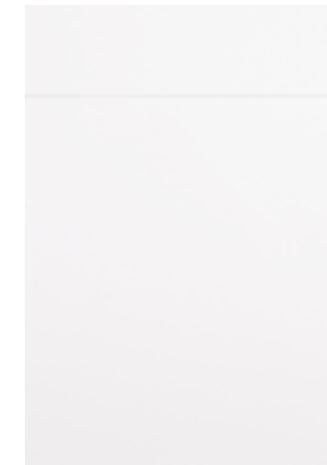
MATTONELLA DOORS



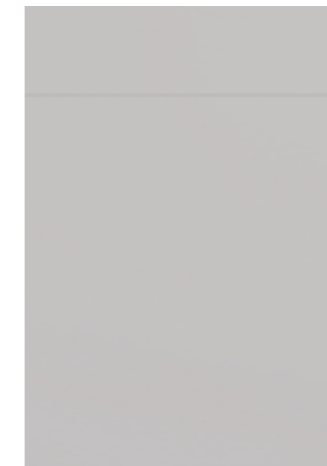
Gloss Stone



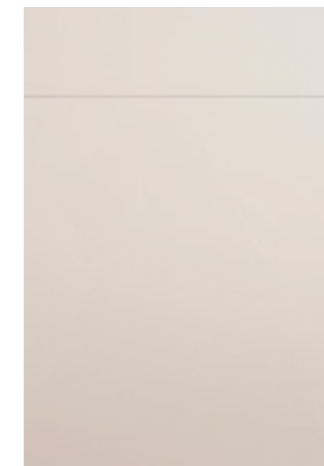
Gloss Ivory



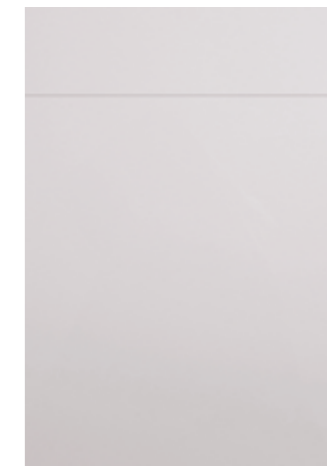
Gloss White



Gloss Grey



Gloss Cashmere



Gloss Light Grey



MODERN



**PAINTED COLOUR OPTIONS**  
Available in a choice of 21 on-trend painted colours.  
You'll find our extensive colour palette on page 150.

**106**

**SETOSA PAINTED**  
IVORY & GREEN

Slab door in a painted matt finish.  
For more options and accessories, see page 142.



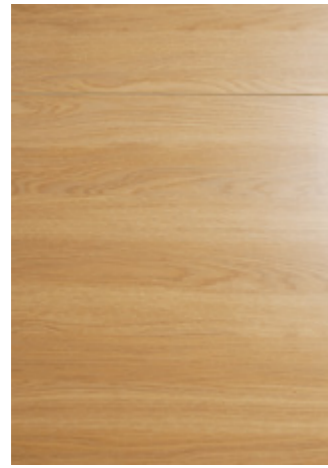




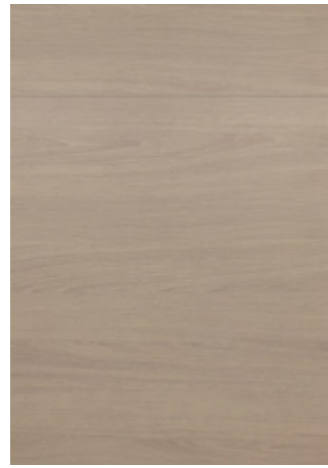




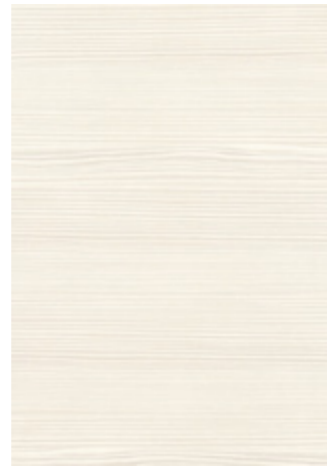
WOODGRAIN DOORS



Lissa Oak



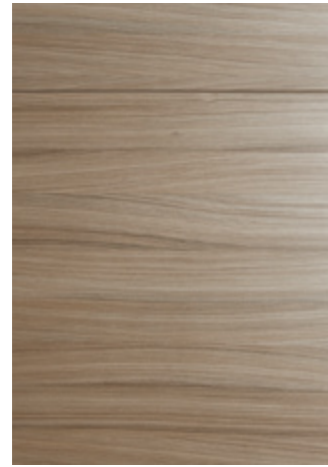
Sand Oak



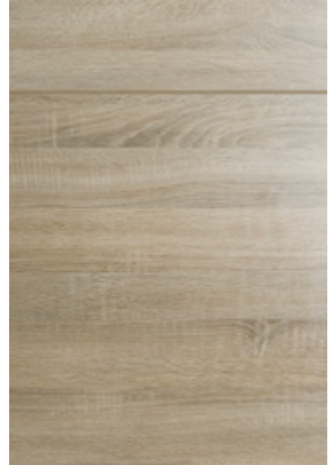
White Avola



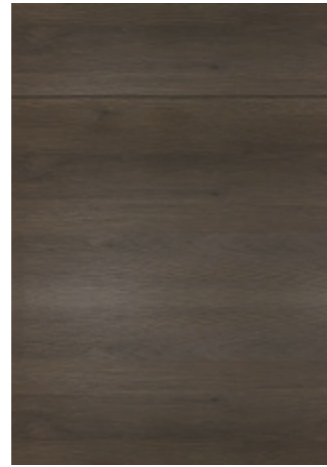
Brown Grey Avola



Driftwood



Bardolino Oak



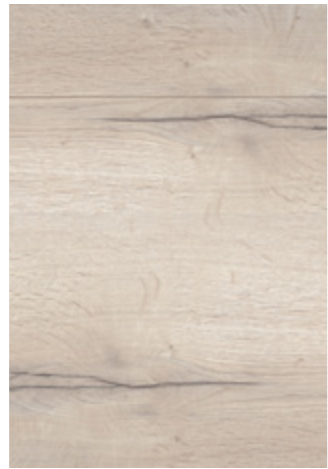
Gladstone Oak



New England Oak



Grey Nebraska Oak



White Oak



Atrium Grey





MODERN

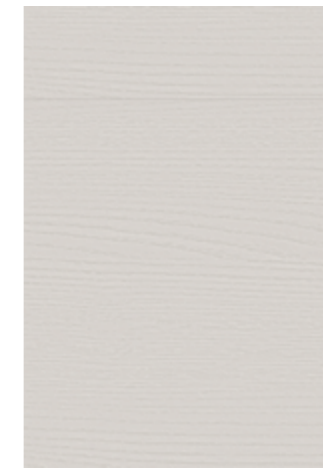


**EMBOSSSED**  
IVORY & TRUFFLE

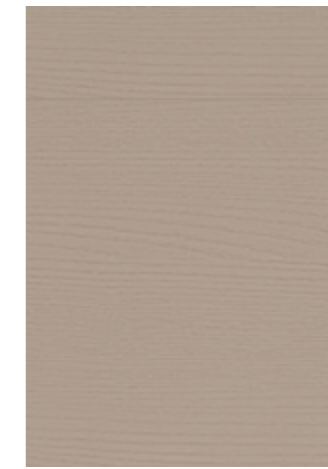
Slab door in a textured finish.  
For more options and accessories, see page 142.

114

EMBOSSSED DOORS



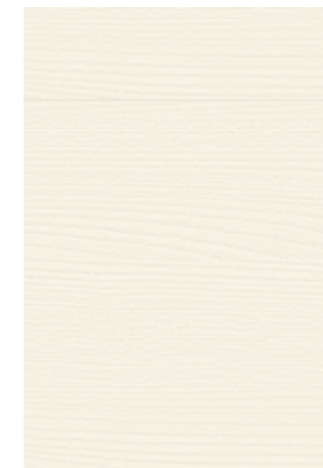
Light Grey



Truffle



Cashmere



Ivory



Anthracite



MODERN



116

**CRYSTAL GLOSS  
LIMESTONE**

Slab door in a gloss limestone finish.  
For more options and accessories, see page 142.



**MODERN**

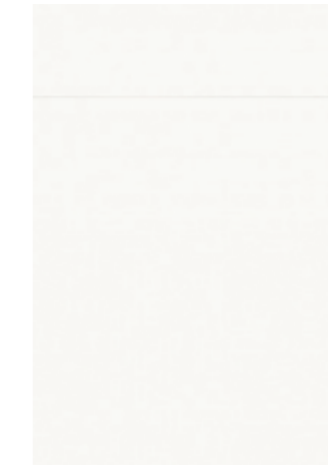


**CRYSTAL  
GLOSS IVORY**

Slab door in a gloss finish.  
For more options and accessories, see page 142.

**118**

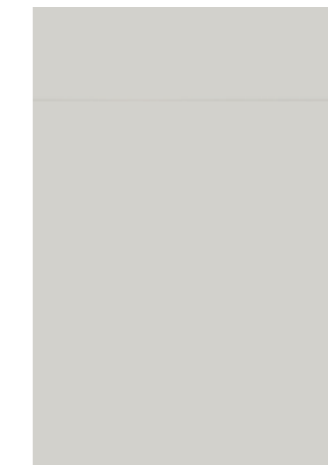
**CRYSTAL DOORS**



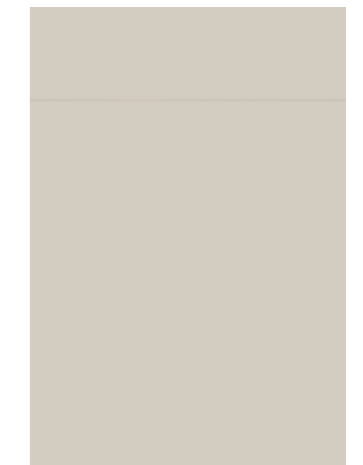
Gloss White



Gloss Ivory



Gloss Light Grey



Gloss Cashmere



Gloss Limestone



**MODERN**



**BELLATO**  
GREY

Slab door in a concrete-effect finish.  
For more options and accessories, see page 142.

**120**



**121**

**SATIN**  
WHITE

Slab door in a matt PVC white finish.  
For more options and accessories, see page 142.





**M**odern family life brings complexity that can only be answered with simple design. The longstanding tradition of reductive design has led to our ultra-modern handleless range. With sharp lines and seemingly undisrupted forms, our handleless kitchens bring family life into the present and beyond.

**20  
YEAR**

**GUARANTEE**  
on all cabinets,  
hinges & drawer boxes

**THE RANGE**

Oblique Painted Blush & Graphite	<b>128</b>
Oblique Gloss White	<b>130</b>
Inset Cube Copper & Dusk Grey	<b>132</b>
Inset Cube Dark Blue & Woodgrain New England Oak	<b>134</b>
Inset Setosa Painted Sage Grey & Woodgrain Atrium Grey	<b>136</b>
Inset Matonella Gloss White	<b>138</b>
Inset Setosa Painted Limestone & Anthracite	<b>140</b>



# GET INTO THE GROOVE. (WITH HANDLELESS)

Early variations of the handleless door started popping up in the swinging sixties, featuring an aluminium groove that sparkled beneath the orange Formica worktops. The kitchen was becoming a space to entertain, and jagged aluminium gullies were the price to be paid for getting down to The Beatles in amongst the crockery.

Before you knew it, every shindig was starting and ending in the kitchen. Turn to today and our handleless range sets the bar for entertaining spaces everywhere, with minimalist styling and a range of features that make your kitchen the place to be. So you can focus on the important things. Like getting your groove on.



# HANDLELESS KITCHENS

Minimalism is always in style, so we offer three different handleless options to maintain those clean lines you want in your sleek new kitchen. Discover Oblique, Touch and Inset – solutions you'll fall in love with.

## OBLIQUE

With a smart chamfered edge on the reverse of the frontal providing plenty of grip, Oblique doors bring crisp lines and angular beauty.



Stainless Steel



Cashmere



Copper



Dark Grey



Limestone



White



## TOUCH

With our Touch range, doors and drawers are opened intuitively by touch with no need for handles.

One or two units – like appliances and pull-out larders – do still require handles. Luckily, we've got a discrete solution for every possibility, so your handleless kitchen will stay that way.

## INSET

Inset allows all of our slab doors to be designed in a handleless way, featuring a discreet handle on the reverse of the door - almost impossible to notice but effortless to use.





HANDLELESS



**PAINTED COLOUR OPTIONS**  
Available in a choice of 21 on-trend painted colours.  
You'll find our extensive colour palette on page 150.

129

**OBLIQUE PAINTED**  
BLUSH & GRAPHITE  
Chamfered painted door.  
Available in a choice of 21 colours.



**HANDLELESS**



**130**



**OBLIQUE**  
GLOSS WHITE

Chamfered painted door.  
For more options and accessories, see page 142.





**INSET CUBE**  
COPPER & DUSK GREY

Slab doors in a brushed copper and smooth dusk grey finish.  
For more options and accessories, see page 142.



HANDLELESS



134

**INSET CUBE**  
DARK BLUE & WOODGRAIN  
NEW ENGLAND OAK  
Slab doors in a smooth and woodgrain effect finish.



**HANDLELESS**



**INSET SETOSA**

PAINTED SAGE GREY  
& WOODGRAIN ATRIUM GREY

Slab doors in a smooth painted & rustic woodgrain finish.



**PAINTED COLOUR OPTIONS**

Available in a choice of 21 on-trend painted colours.  
You'll find our extensive colour palette on page 150.



HANDLELESS



138

**INSET MATTONELLA**  
GLOSS WHITE

Slab door in a gloss white finish.  
For more options and accessories, see page 142.



**HANDLELESS**



**INSET SETOSA**  
PAINTED LIMESTONE & ANTHRACITE  
Slab door in a smooth painted finish.



**PAINTED COLOUR OPTIONS**  
Available in a choice of 21 on-trend painted colours.  
You'll find our extensive colour palette on page 150.







# DOORS, HANDLES, SINKS, TAPS, WORKTOPS, LIGHTING, CABINETS.

142

## OPTIONS

Door Collection	146
Painted Colours	150
Cabinets	154
Drawers	156
Handles	158
Sinks & Taps	160
Worktops	162
Lighting	166
Design Features	170
Organisation	174
Clever Storage	176
Planning	180
FAQs	182
Index	183
Kitchen Specifications	184

OUR ONLINE VISUALISER IS THE FIRST  
STEP IN BUILDING YOUR DREAM KITCHEN.



Create your perfect kitchen using our visualiser tool at [sheratonvisualiser.co.uk](https://sheratonvisualiser.co.uk), or as an iPad app. Select from a range of painted door styles, worktops, flooring and wall colours. You can save your creation, email to yourself or a friend, or share on Facebook, Pinterest or Twitter.

To download the app, visit Apple App Store and search Sheraton configurator.





**SCAN VIA INSTAGRAM AND SEE  
OUR KITCHENS COME ALIVE.**

Open Instagram and tap to search, you'll see this  top right.

Scan the nametag above and you'll be taken straight  
to our instagram feed for further inspiration.



**SIT BACK  
& RELAX WITH  
A COFFEE, WHILE  
YOU DESIGN  
YOUR NEW  
KITCHEN IN  
THE COMFORT  
OF YOUR OWN  
HOME.**



**OUR ONLINE VISUALISER IS  
THE FIRST STEP IN BUILDING  
YOUR DREAM KITCHEN.**

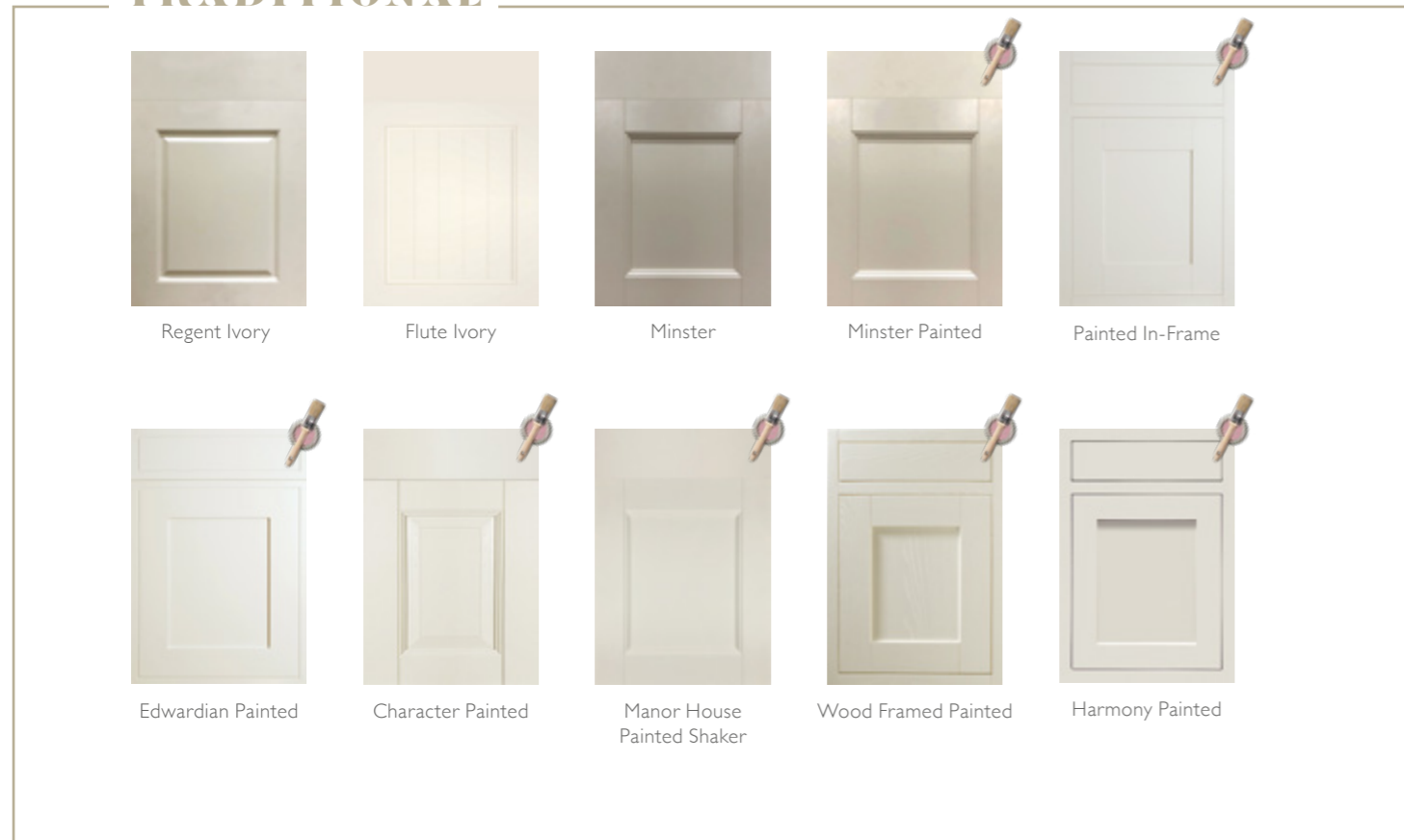
[sheratonvisualiser.co.uk](http://sheratonvisualiser.co.uk)



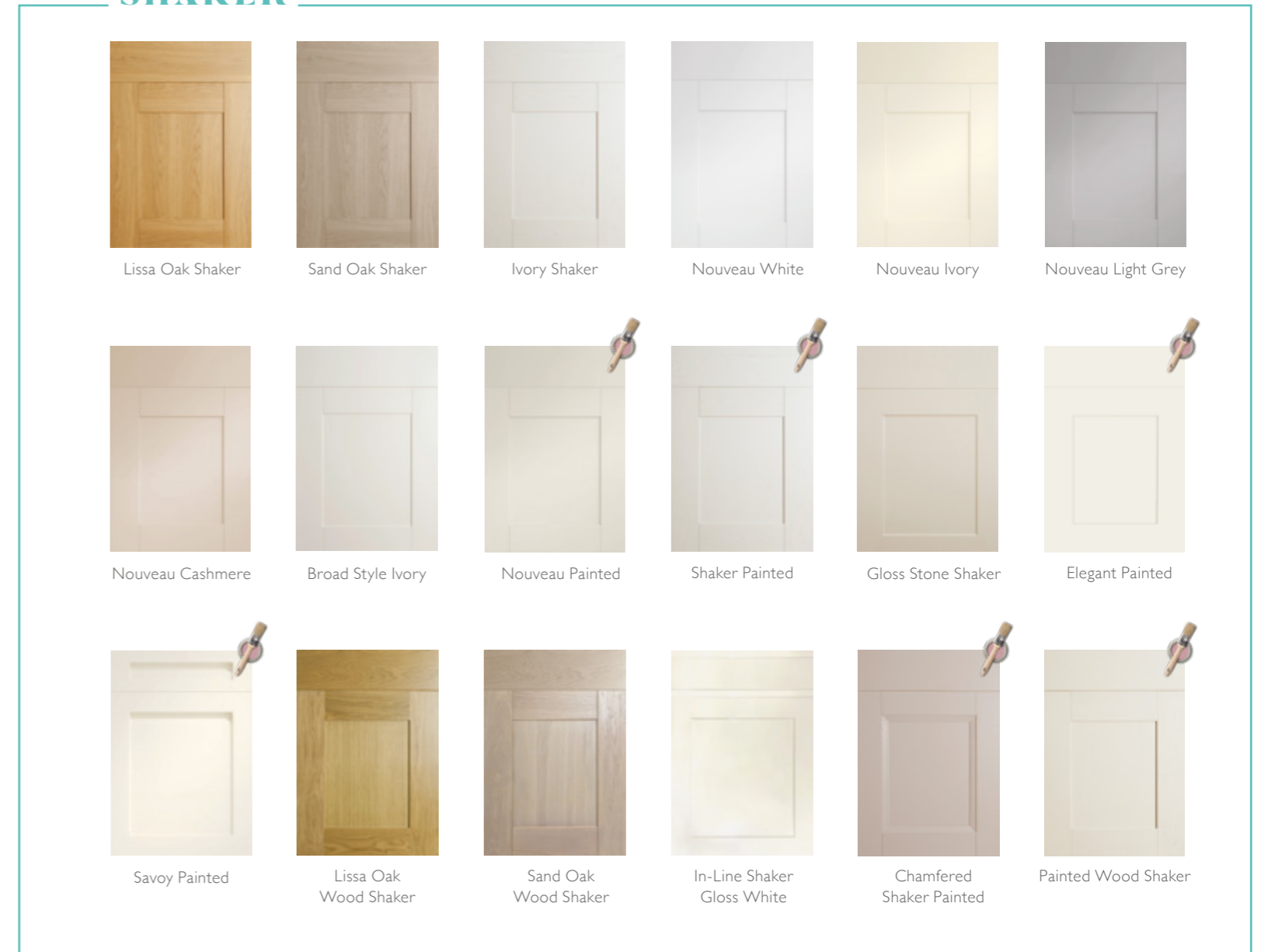
# DOOR COLLECTION

The door style can define the whole look and feel of your new kitchen. That's why we've created a door range to suit every kind of home and every kind of taste.

## TRADITIONAL



## SHAKER



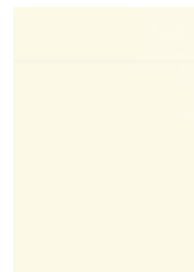
**PAINTED COLOUR OPTIONS**  
Available in a choice of 21 on-trend painted colours. You'll find our extensive colour palette on page 150.



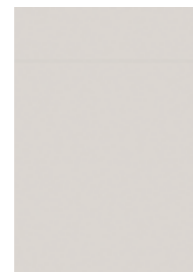
MODERN



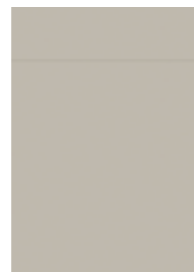
Bellato Grey



Cube Ivory



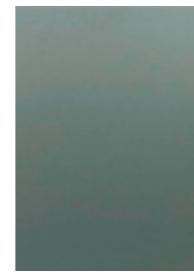
Cube Light Grey



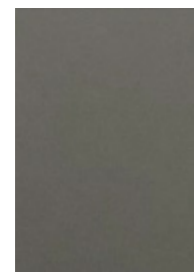
Cube Limestone



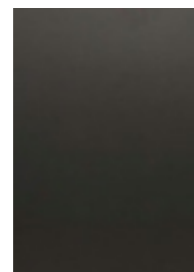
Cube Cashmere



Cube Fjord



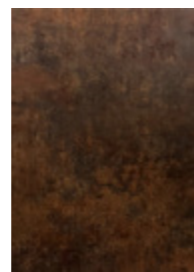
Cube Dust Grey



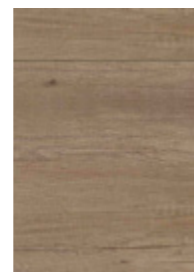
Cube Graphite



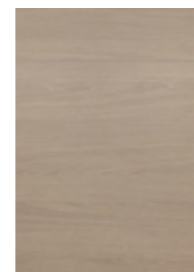
Cube Dark Blue



Cube Copper



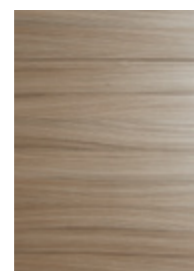
Woodgrain Grey  
Nebraska Oak



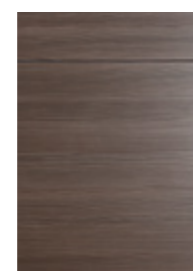
Woodgrain  
Sand Oak



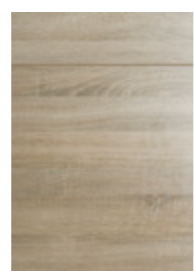
Woodgrain  
Lissa Oak



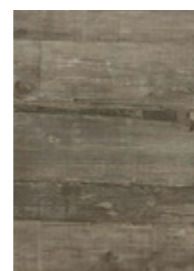
Woodgrain  
Driftwood



Woodgrain  
Brown Grey Avola



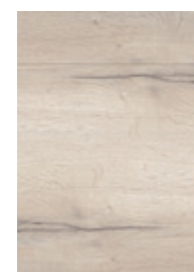
Woodgrain  
Bardolino Oak



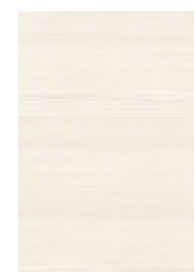
Woodgrain  
Atrium Grey



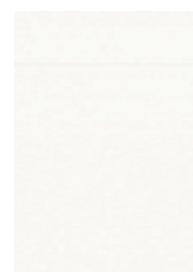
Woodgrain  
New England Oak



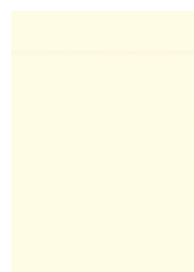
Woodgrain  
White Oak



Woodgrain  
White Avola



Crystal Gloss  
White



Crystal Gloss  
Ivory



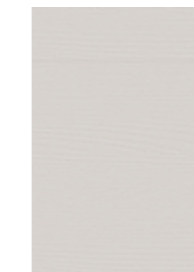
Crystal Gloss  
Light Grey



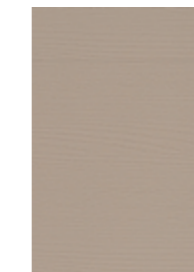
Crystal Gloss  
Cashmere



Crystal Gloss  
Limestone



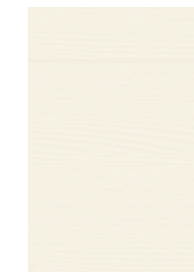
Embossed Light Grey



Embossed Truffle



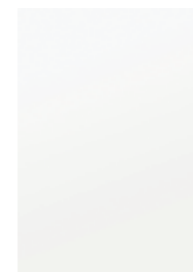
Embossed Cashmere



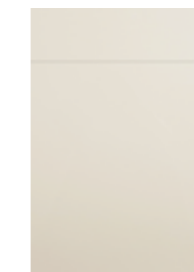
Embossed Ivory



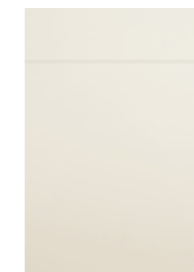
Embossed Anthracite



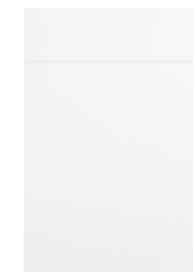
Satin White



Mattonella Gloss  
Stone



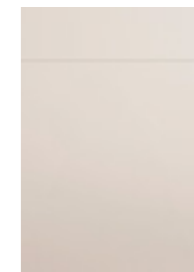
Mattonella Gloss  
Ivory



Mattonella Gloss  
White



Mattonella Gloss  
Grey



Mattonella Gloss  
Cashmere



Mattonella Gloss  
Light Grey



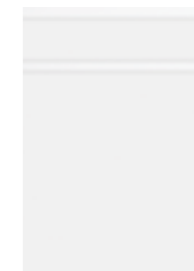
Oblique Gloss  
White & Painted



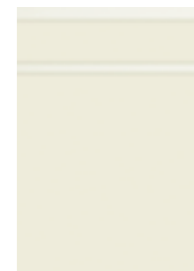
Setosa Painted



Autograph Painted



In-Line Gloss  
White



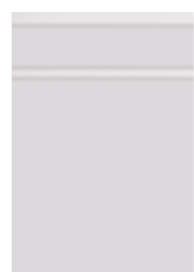
In-Line Gloss  
Ivory



In-Line Gloss  
Grey



In-Line Gloss  
Cashmere



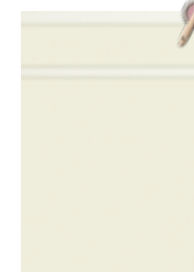
In-Line Gloss  
Light Grey



In-Line Gloss  
Anthracite



In-Line Gloss  
Limestone



In-Line Painted



Lustre Metallic





## 21 PAINT COLOUR OPTIONS



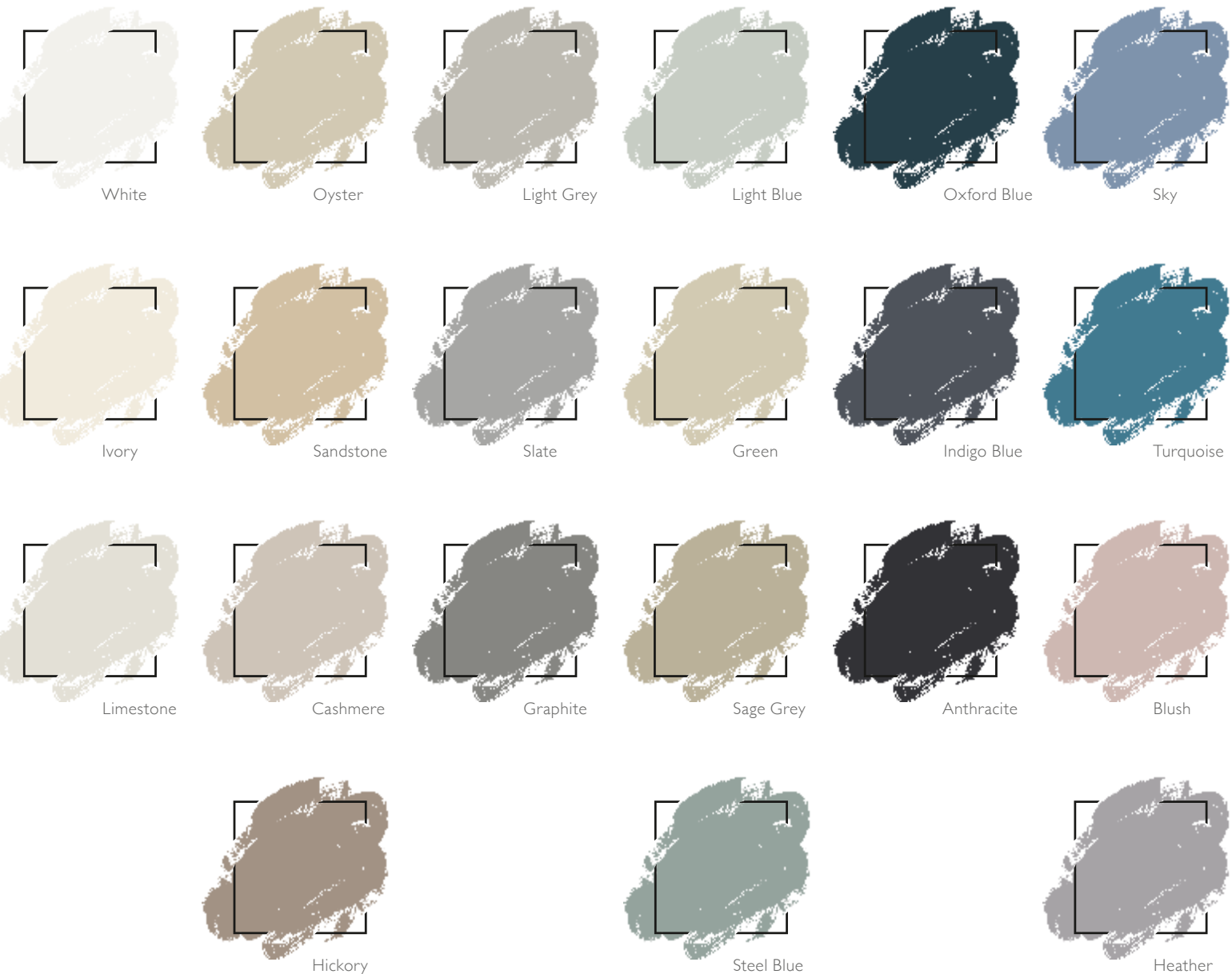
### BOLDER, BRIGHTER, BETTER CHOICE

Let your personality shine and make your new kitchen truly your own, with a newly expanded range of exciting door colours to choose from.

We've released seven new on-trend colours to brighten things up: Blush, Turquoise, Slate, Sky, Indigo Blue, Graphite and Heather.

That means you can now choose from a spectrum of 21 paint colours. From elegant Ivory to deep Oxford Blue to bold Anthracite, there's a colour to suit every taste.

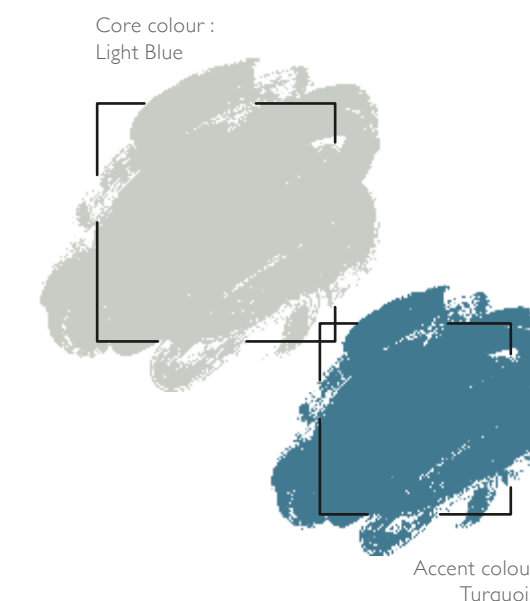
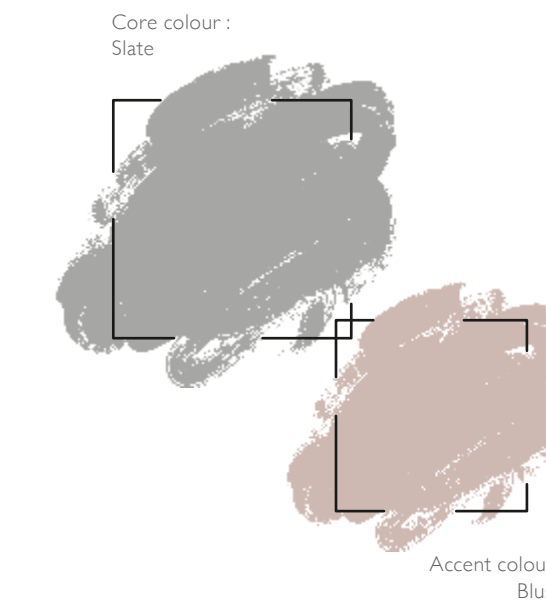
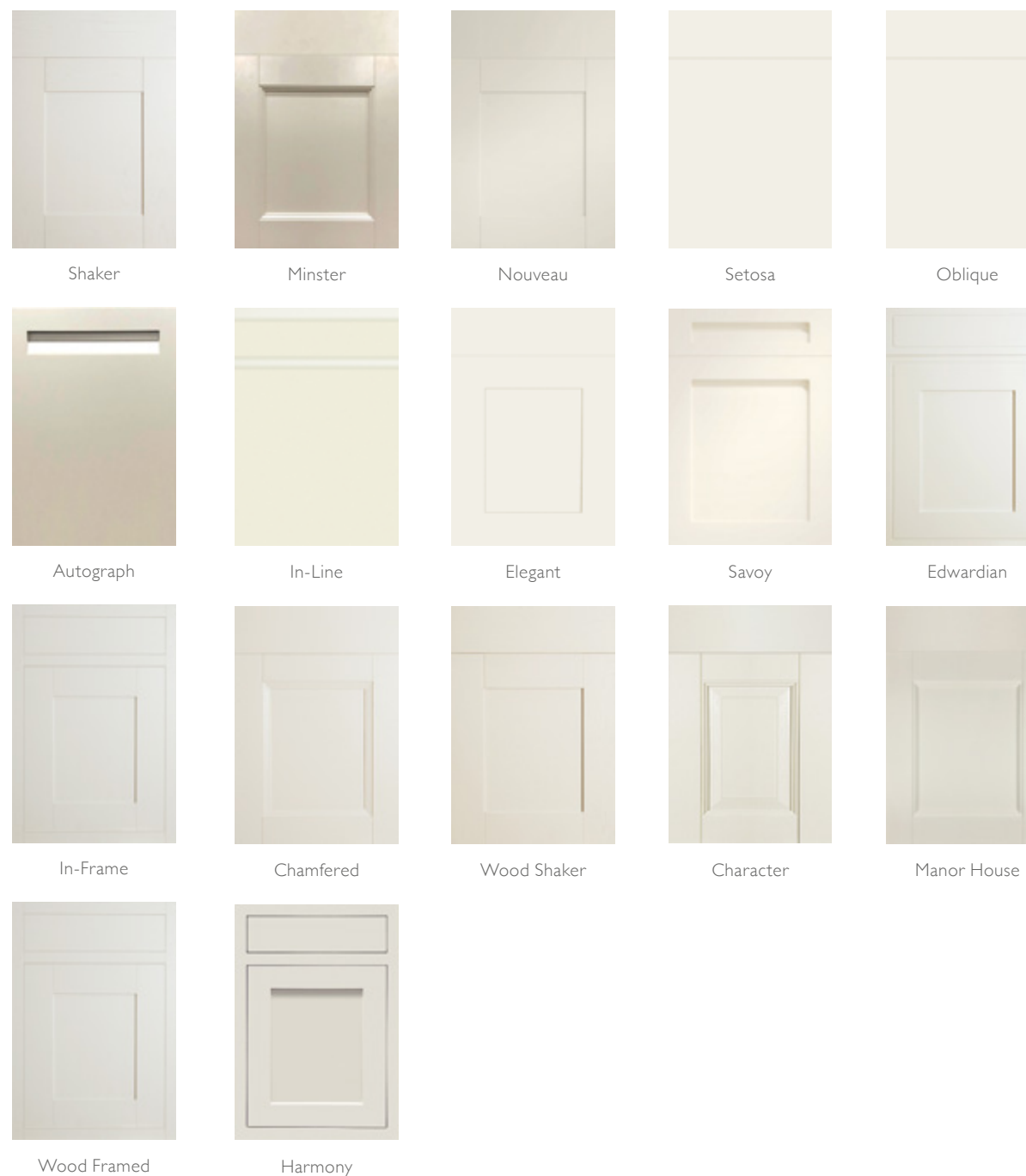
**LIGHTS    NEUTRALS    GREYS    BLUES/GREENS    DARKS    STATEMENT**



## 17 PAINTED DOOR STYLES

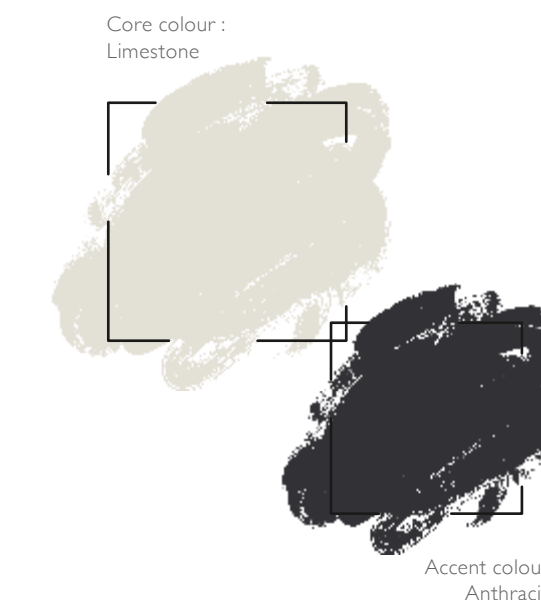
### NEW DESIGNS AND CLASSIC FINISHES

Our eclectic range of 17 door styles span the entire history of cabinet design, from the decorative bevelling of Manor House to the sleek minimalism of Autograph. Each design is available in all 21 of our paint colours, so you're free to pair classic style with a contemporary palette.



### THE PERFECT MATCH

With such a range of colours to choose from, it can be hard to settle on a scheme – so for inspiration we've provided a few examples of core colours and complimentary accents. Whether you opt to accent your base or wall units is up to you, but even subtle accenting can bring real drama to your space.





# CABINET SPECIFICATION

**20**  
**YEAR**  
**GUARANTEE**  
on all cabinets,  
hinges & drawer boxes

## SHOW ~ YOUR ~ COLOURS

Go bold with our 7 new paint colours: Blush, Turquoise, Slate, Sky, Indigo Blue, Graphite and Heather. And if you don't want to go all out, why not use a bold colour on just the base units or just on your island.

All our cabinets are made to the highest standards of British manufacturing. They're pressed under controlled conditions to ensure they're perfectly square and totally rigid. They also feature solid back panels, have no visible screws or fixings and are fully edged to protect against moisture, even on the edges you don't see.

All this simply means that your only worry when choosing your cabinets is what they bring to the style of your kitchen. Do you want the warmth of a natural wood effect or a gloss finish?

Extra features like adjustable shelving, soft-closing hinges and anti-tip fittings make your cabinets unique.



### ALL OF OUR CABINETS COME WITH THE BELOW AS STANDARD:

- Adjustable shelf positions
- Fascias can be adjusted in multiple directions to align the doors
- Choice of depth – 300mm or 350mm units
- Choice of height – 576mm, 720mm or 900mm
- Customisable shelf position in double-width units, thanks to a divisional panel in the centre of the unit
- Adjustable legs for fitting base units on uneven floors
- Glass shelves as standard for glazed units
- 50mm service void for ease of maintenance

## YOUR KITCHEN, YOUR COLOURS.

You can choose to contrast or blend your cabinet colour with the doors and drawer fronts, for no extra cost. We offer a range of 11 cabinet finishes in different colours. Matching plinths and frontals, panels and pilasters help you to complete the theme.



Platinum White



Matt Ivory



Matt Cashmere



Gloss White



Gloss Ivory



Gloss Cashmere



Gloss Stone



Aluminium



Lissa Oak



Sand Oak



Graphite

Graphite cabinets can be matched with graphite frontals, drawers and wirework for a fully coordinated look.

Go to page 176 to view our clever storage solutions in graphite.



## GRASS® SCALA STONE & NOVA PRO

Sheraton kitchens proudly use drawer boxes by GRASS®, a world-class supplier of quality drawer systems. With technical precision and Sheraton style combined, your premium and personalised kitchen result is assured.

The choice is yours between three different drawer options, all fitted with soft-close technology for smooth and silent operation.



GRASS® SCALA STONE

## GRASS® SCALA STONE & NOVA PRO ALUMINIUM DRAWER FEATURES

- **Ultra-smooth** – Fully synchronised drawer runners open smoothly and with low force
- **Soft-close** – Smooth and silent action prevents slamming of drawers
- **Strong** – Full extension runners mean load-bearing capacity is 40kg (more than conventional drawer systems)
- **Spacious** – More storage space provided by twin-wall, metal-sided drawer box with straight internal sides
- **Solid base** – A 16mm base delivers extra rigidity and reliability
- **Easy-clean** – Tool-free removal of the drawer and drawer front make thorough cleaning hassle-free



GRASS® CALA STONE (with square side profile). Supplied as standard.



GRASS® NOVA PRO ALUMINIUM (with curved side profile). Supplied as a free-of-charge option.

GRASS® SCALA STONE Pan Drawer with Rails



GRASS® NOVA PRO Drawer with Rails



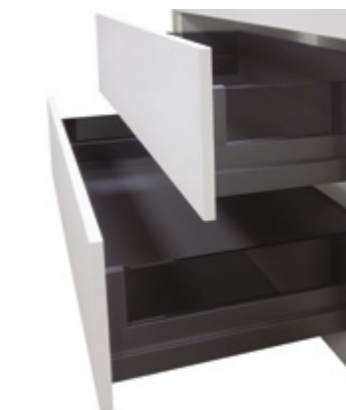
## LUXURY OAK DRAWER BOXES

Superior solid oak drawer boxes will add luxury to any kitchen. These are available in both drawer boxes and pan drawers, held together with the traditional dovetail joint, and fitted with GRASS® soft-close runners. Oak is particularly well paired with painted ranges.



## SMOKED GLASS & CRYSTAL GLASS PAN DRAWER SIDE OPTIONS

Pan drawers are the solution to messy cupboards when it comes to keeping the kitchen sleek and tidy. The traditional railings allow pan handles to protrude, sometimes making it a struggle to close drawers properly. That's why, as well as railings, we offer the alternative option of smoked\* or crystal glass sides. Available free of charge as an optional extra, this chic solution helps keep your pan drawers closing perfectly.



GRASS® SCALA STONE Pan Drawer with Smoked Glass



GRASS® NOVA PRO Drawer with Crystal Glass

\*Smoked Glass is only available with Scala whilst Clear Glass is only available with Nova Pro.



# HANDLES

It's amazing the difference that good handle selection can make to the overall finish of your kitchen. Personalise your Sheraton kitchen with our wide range of stylish and practical options.

## MODERN



## TRADITIONAL



Please note, not all handles are suitable for each kitchen. Most are supplied at no extra charge, however, some premium options do carry a surcharge. Your Sheraton retailer will happily advise you on suitability and cost. All handles are fitted vertically unless specifically stated.



# SINKS

# OPTIONS

It's where potatoes are peeled for a hearty Sunday roast. It's where little hands are rinsed after dipping into the cake mix. And it's where your best plates – the ones too delicate for the dishwasher – are washed up ready to entertain guests another time.

That's why we take our sinks seriously. Sheraton's sleek stainless steel products are made of 18/10 – the highest grade available, which is resistant to staining, rusting and corrosion.

Our HYDRA ceramic sinks come in different colours, from black to white, for a striking impression or a classic style. But looks aren't everything: the 80% quartz granite also has anti-bacterial properties, as well as being resistant to heat, burns and stains.



HYDRA 1.0 Bowl (White)    HYDRA 1.0 Bowl (Grey)    HYDRA 1.0 Bowl (Black)



HYDRA 1.5 Bowl (White)    HYDRA 1.5 Bowl (Grey)    HYDRA 1.5 Bowl (Black)



LIBRA 1.0 Bowl Small    LIBRA 1.0 Bowl    LIBRA 1.5 Bowl    MERCURY 1.0 Bowl    MERCURY Drainer    SATURN 1.0 Bowl Undermount



SATURN 1.5 Bowl Undermount    NOVA 1.0 Bowl Undermount Small    NOVA 1.0 Bowl Undermount Large    NOVA 1.5 Bowl Undermount    JUPITER 1.5 Bowl (reversible)    PLUTO 1.0 Bowl (reversible)



PLUTO 1.5 Bowl (reversible)    EUROPA 1.0 Bowl Compact    EUROPA 1.0 Inset Bowl    EUROPA 1.5 Inset Bowl    TITAN 1.0 Inset Bowl



TITAN 1.0 Inset Bowl Compact    TITAN 1.5 Inset Bowl    BELFAST 1.0 Bowl Sink (white)    PORTLAND 1.0 Bowl    PORTLAND 1.5 Bowl

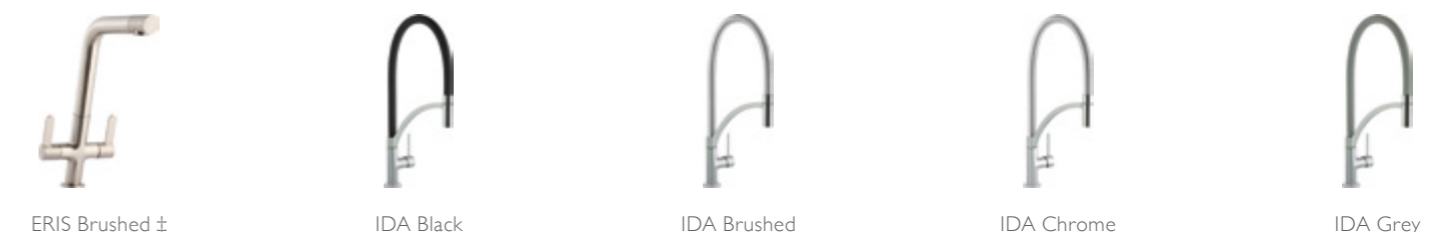
# TAPS



CHARON Chrome    CHARON Black    CHARON Grey    CHARON Brushed    CHARON White



ELARA Chrome    VESTA Chrome    LIBERTY Chrome    SWAN Chrome\*    EVA Brushed ‡



ERIS Brushed ‡    IDA Black    IDA Brushed    IDA Chrome    IDA Grey



IDA White    LEDA Chrome    LEDA Black    LEDA Brushed    LEDA Grey



LEDA White    CORA Brushed ‡    COX CRUCIFORM Chrome\*\*    FLEXIO Chrome †    U NECK SINGLE LEVER Chrome

† Ideal for mounting on a solid surface such as wood or granite. \* No diffuser supplied. \*\* Requires a minimum 5 metre head or pressured system. ‡ Also available in Chrome.

All taps are WRAS approved except: Liberty, Swan, Cox Cruciform and Flexio.



# WORK-TOPS

Our eclectic range of 60 luxurious worktop finishes gives you complete creative control over the base tones and textures of your new space. Bring natural depth and warmth with Dark Mountain Oak, or classical opulence with the Italian-inspired Nero Portoro.

We use the highest quality Duropal laminates, which allows us to alleviate your worries about sunlight damage, scratching, abrasion, coffee stains, tea stains, red wine, ink and small burns. No surprise that Duropal hold the FIRA Gold Award for product excellence.

## THE CUTTING EDGE

Our worktops are available in both Quadra (rounded) and Square edge profiling.

Square is the more versatile, available in 40mm, 22mm and 12mm compact in addition to curved surfaces.

Quadra is available in 40mm (with 4 options in 20mm) on straight surfaces.

Quadra edging features 'seal-groove' technology that protects from a lifetime of steam and moisture damage.



## AHEAD OF THE CURVE

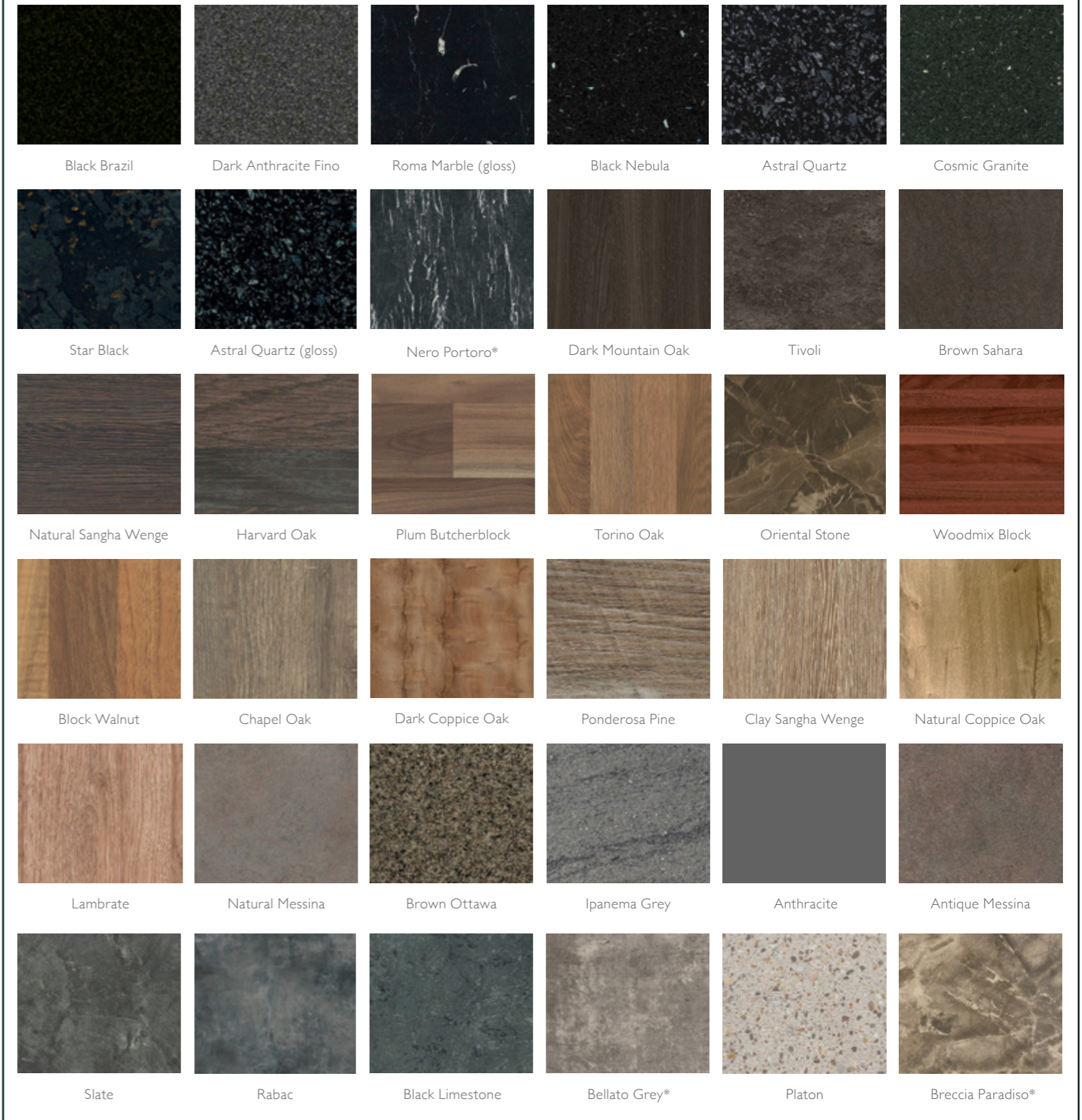
Improve the flow of your workspace with curved base ends and corner units, topped by meticulously designed curved worktops, available in square edged 40mm and 22mm, in all colours.

## GABLE ENDS

Elevate your surface spaces with a raised gable end, the perfect place to share cocktails with friends and tidy away the barstools when you're done. Available in square edged 40mm and 22mm, in all colours.



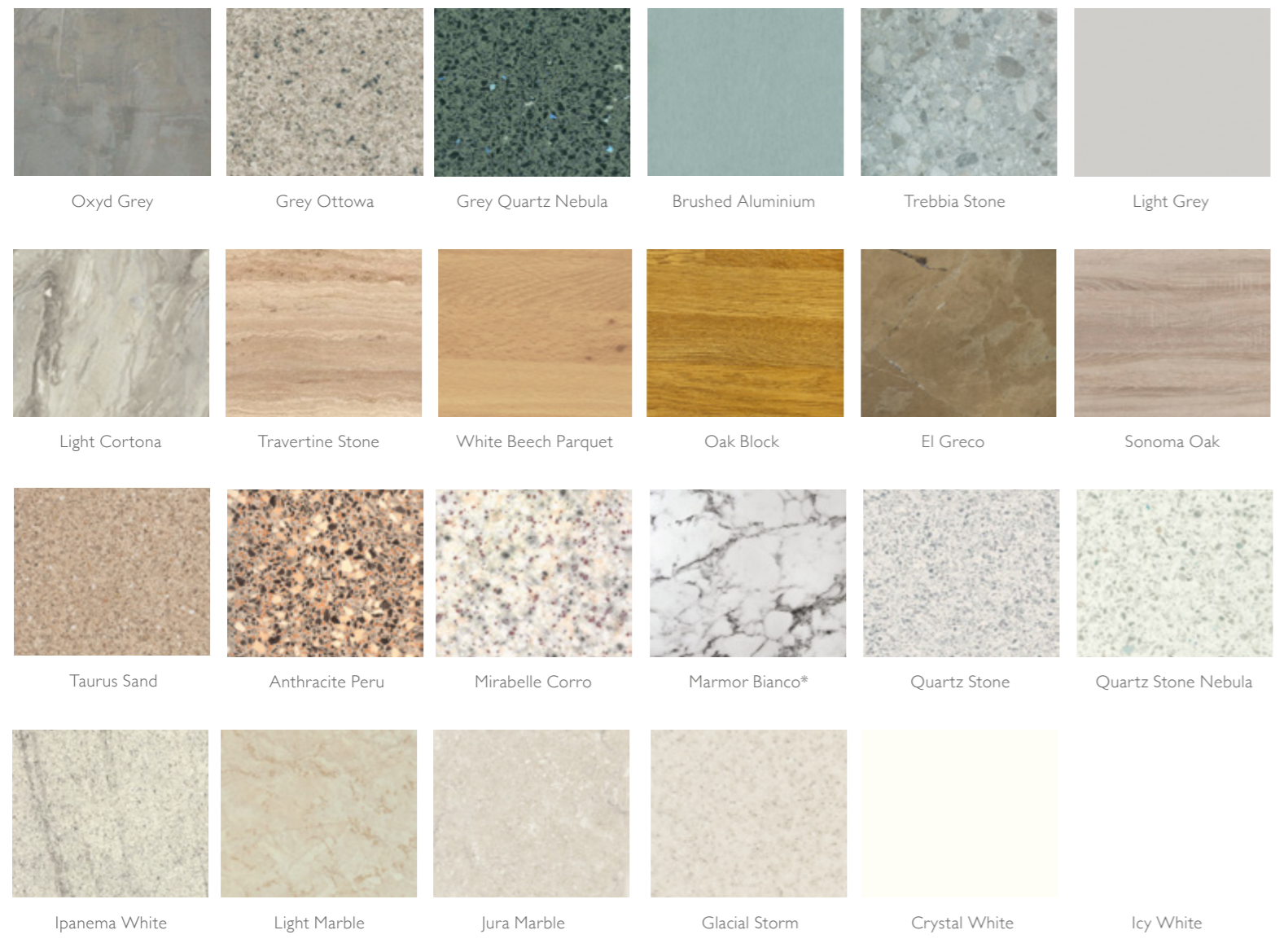
## 40MM & 22MM



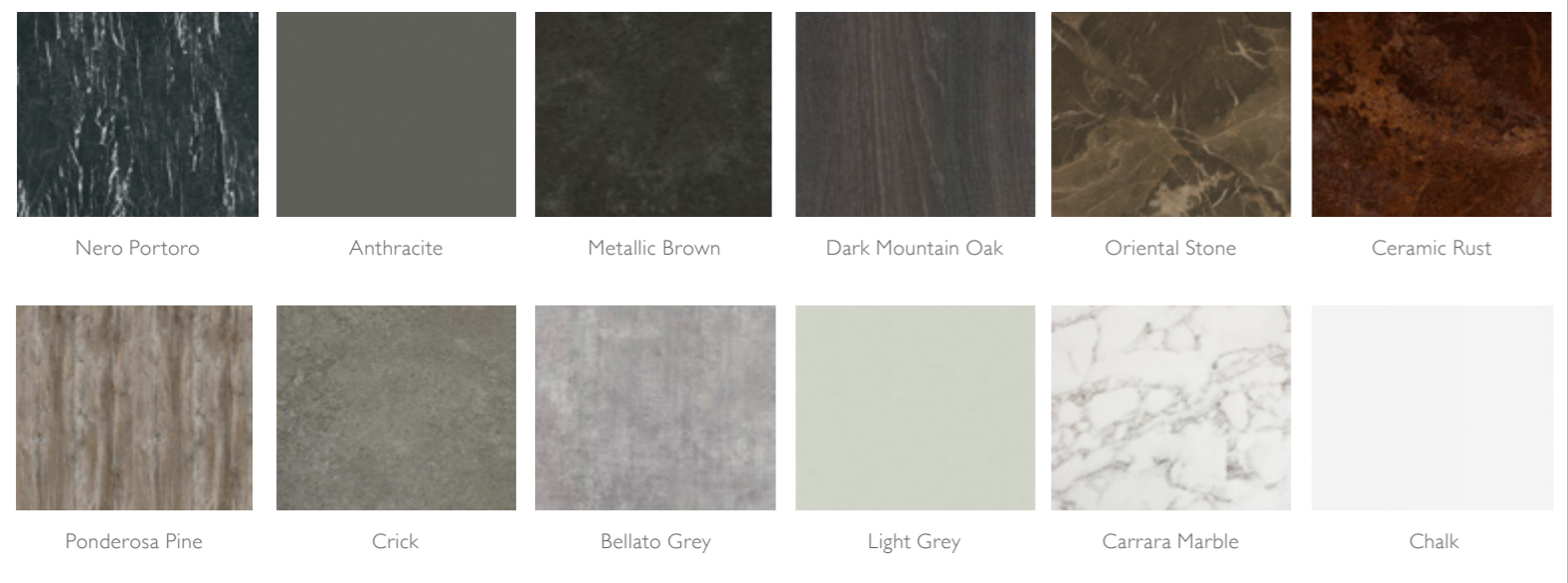
\* Available in 20mm Quadra profile.



**40MM & 22MM**



**12MM COMPACT**



\* Available in 20mm Quadra profile.

**BACKBOARDS & UPSTANDS**

A practical feature provides an opportunity to express your style. An alternative to tiling can be extending the attractive worktop surface onto the back wall to protect from splashback and staining. Available in all colours.



**YOUR KITCHEN. YOUR WAY**  
**DISCOVER. DESIGN. SHARE.**



For more inspiration,  
 please visit [sheratonkitchens.co.uk](http://sheratonkitchens.co.uk)



# LIGHTING

Lighting makes all the difference. From strip lights to drawer lights, from table lights to floating shelves, and from cabinet lights to sensor lights, we know exactly how to bring your brand-new kitchen to life.

## UNDER CABINET STRIP LIGHTING



Strip Light in sizes 222, 343, 525 and 904mm  
Code: LTLED 222, 343, 526 or 904

## IN CABINET LIGHTING



SENSOR Lighting in sets of 2 or 3  
Code: LTSEN2 or 3

## FLEXIBLE STRIP LIGHTING



3m Bendable Strip with solid light  
Code: LTBND3



2m Flexible Strip with high output  
Code: LTFLEXHP

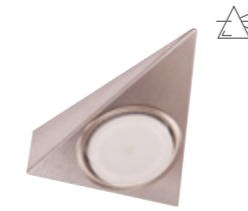


SIGMA Flexible Bendable Strip Light 5m length  
Code: LTFX5

## UNDER CABINET LIGHTING



NOVA Rechargeable Unit Light  
Code: LTCHRG



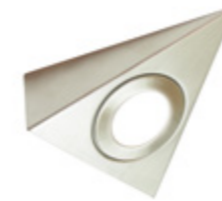
60 POINT Triangular Light  
Code: LTTRI60



ALPHA Square Light in Black in sets of 2 or 3  
Code: LTASQ 2BL OR 3BL



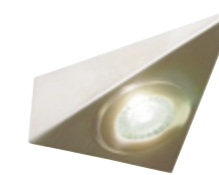
ALPHA Rectangular Light in Black in sets of 2 or 3  
Code: LTARC 2BL OR 3BL



CAPELLA Triangular Light  
Code: LTCAPELTRI



CAPELLA Round Light  
Code: LTCAPELLA



POLARIS Triangular Light  
Code: LTTRIPOL2



POLARIS Round Light  
Code: LTRNDPOL2



SIRIUS Tablet Light in sets of 2 or 3  
Code: LTTAB 2 or 3



SIRIUS Magnetic Round Light in set of 2  
Code: LTSDL2



SOLARIS Square Light in sets of 2 or 3  
Code: LTDSQ 2 or 3



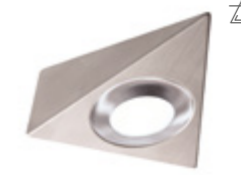
SOLARIS Square Light in sets of 2 or 3  
Code: LTSOLSQ 2 or 3



SOLARIS Rectangular Light in sets of 2 or 3  
Code: LTDRC 2 OR 3



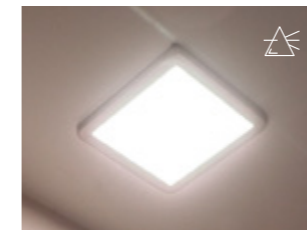
SOLARIS Rectangular Light in sets of 2 or 3  
Code: LTSOLRC 2 OR 3



VEGA Triangular Light in sets of 2 or 3  
Code: LTVTRI 2 or 3



VEGA Round Downlight in set of 2  
Code: LTVDL2



VEGA Square Downlight in set of 2  
Code: LTVSQ10



HALO Triangular Light in set of 2  
Code: LTHALTRI2



HALO Round Light in set of 2  
Code: LTHAL2

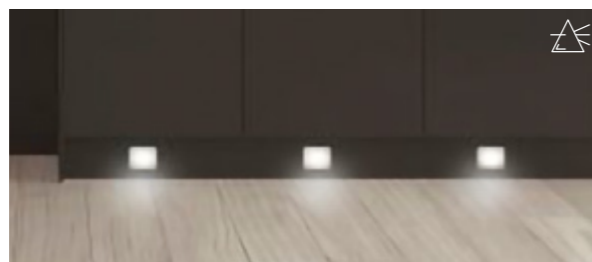


## DRAWER LIGHTING



Drawer Light to fit in 500,600,800,900mm drawers  
Code: LTDRW50/60/80/90/100

## PLINTH LIGHTING



VEGA Square Plinth Light  
set of 4  
Code: LTVPL4



VEGA Round Plinth Light  
set of 4  
Code: LTVRND4

## SHELF LIGHTING



SIRIUS Floating Shelf Light  
in sizes 600 or 900mm  
Code: LTSHELF 60 or 90



TORINO Black Lit Shelf  
in sizes 600 or 900mm  
Code: LTBXS 60BL or 90BL



Glass Shelf Strips LED Light  
in pack of 2 strips 500mm unit  
Code: LESHLED2

168

## SOCKETS & SWITCHES

The touch dimmer offers a simple plug and play connection system, so a maximum of 6 lights can be controlled from a single switch.



Touch Dimmer Switch  
Code: LTDIM

Switch is designed to work by automatically turning a light on or off when a door is opened or closed.



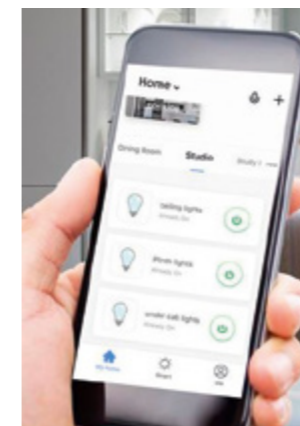
Infra Red Door Sensor  
Code: LTDRSWITCH

Allows lights to be controlled by a swipe of the hand.

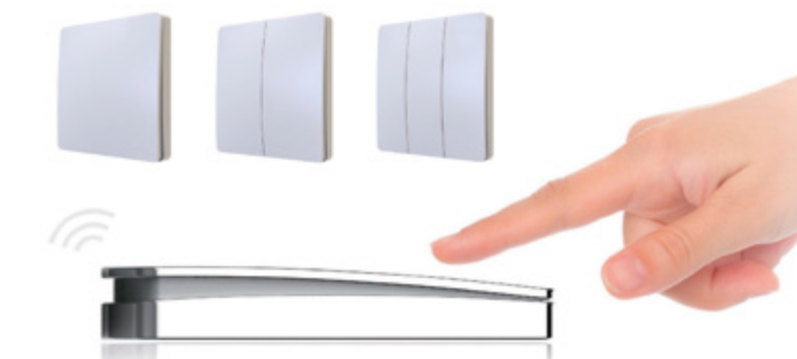


Infra Red Swipe Sensor Switch  
Code: LTIRSWITCH

The Wireless Kinetic Switch System doesn't use batteries or wires and allows you to control the lights by hand using the wireless switch, from a smart device or through voice-controlled systems.



Wireless Kinetic System for Smart Devices  
Code: LTKINREC



Wireless Kinetic Switch in 1, 2 or 3 gang  
Code: LTKINS 1, 2 OR 3



Motorised Pop up Socket with 2 USB pins and wireless charger. Available in Black or Silver  
Code: LTQISK BL or SL



Pop up Socket with 2 USB pins. Available in Black or Silver  
Code: LTKT BL or SL

169



Nothing could be more enjoyable than selecting the individual features that help set your new kitchen apart from the rest. Sheraton serves up a whole menu of different design options to choose from. Combine stylish touches and practical innovations to achieve the customised result you deserve.



### WALK-IN CORNER LARDER STORAGE

Corner cupboards are tricky things. While there's plenty of space in there to store foodstuffs, the depth means that all too often items get hidden, lost and forgotten. With that in mind, we designed our walk-in corner larder unit, with fully accessible storage and even a full-height wine rack.

Or you might choose the standard corner larder unit which also provides easy access and includes four Kessebohmer LeMans storage systems.

### DRAWER OPTIONS

You might never have thought about it, but the way kitchen drawers are arranged – as well as their number – can differ from kitchen to kitchen. The right configuration of deep pan drawers<sup>(1)</sup>, contrasted with shallower top drawers<sup>(2)</sup>, will deliver the best storage and visual effect for your kitchen. Your Sheraton retailer will be happy to help you find the perfect fit.



(1)



(2)



### L-SHAPE CORNER UNITS

Specially designed to get the most out of these hard-to-reach spaces, our L-shape corner units are available in different sizes and are ideal for everyday accessible storage.



### USING UNITS DIFFERENTLY

It's time to take a fresh look at kitchen units. With Sheraton you can create your very own unique design. For example, you could take a humble bridging unit and combine it with open plan shelving, creating a whole new design feature that's practical as well as attractive.





### GLAZED UNIT

It's time to turn your wall units into eye-catching features. With one of our glazed wall unit designs, you can turn a cupboard door into a cupboard window. Not only does this add a touch of chic, it also saves you opening every cupboard to check what's inside.

### CHUNKY PILASTER

Add elements of traditional flair such as pilasters, small pillars that work perfectly with a Sheraton kitchen. This means you can take complete control of building the right look and feel for your space.



### LARDER UNITS WITH OAK DRAWERS

Few things beat the dignified beauty of real oak wood. That's why, for our larder and pantry unit options, exquisitely crafted oak drawers are available in a variety of heights and styles. Experience the satisfaction of good taste each time you reach for a jar or a ramekin.

### LIFT-UP WALL UNITS

Sometimes you need access to a storage space for longer, for example while cooking. But leaving cupboard doors open is unsightly and unsafe. Enter the lift-up wall unit. This flap door opens upwards and remains open until you're ready to close it. Built-in soft-close technology means you'll never have to hear it slam.



### WORKING MANTEL

Give your space the solid respectability of a Victorian kitchen with an attractive mantel. Select from an array of veneered and painted finishes, then enjoy the extra storage as well as the vintage vibes.



### CURVED CORNER UNIT

This sophisticated approach removes the angles from corners and adds a sweeping line instead, with a curved door that will suit both contemporary and traditional interiors. Pairing perfectly with curved laminate worktops, curved corner units are available with these kitchens: In-Line\* (all colours), Elegant (all colours), Chamfered (all colours), Character (all colours), Manor House Painted Shaker, Painted Shaker (all colours).

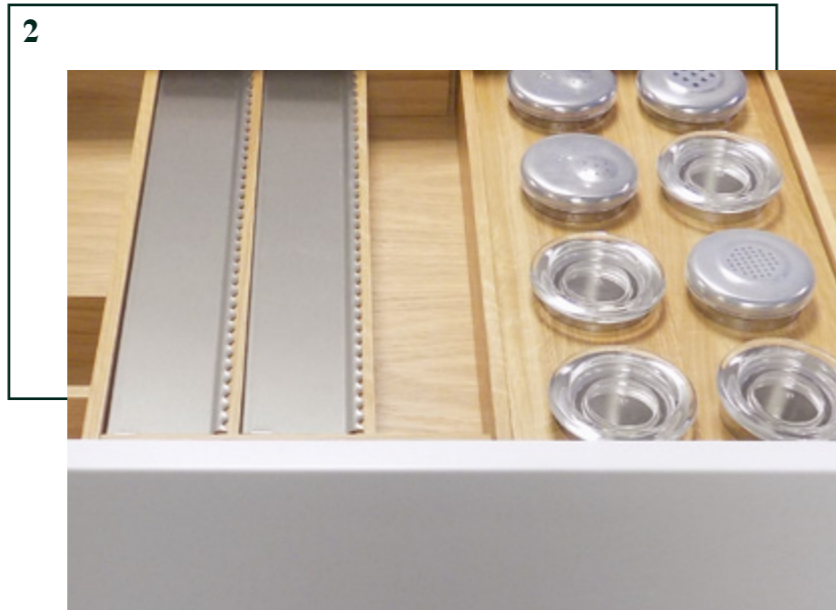
\*Please note the curved unit used for In-Line ranges is supplied with two doors

### WICKER BASKET

For a real rustic touch, we recommend wicker basket storage. As base units they are ideal for larder-style storage, and the soft materials will add a note of warmth and tradition to your new kitchen.







A fully functional, highly organised kitchen is also a beautiful one. Especially when it comes with a host of ingenious features and accessories designed to make life easier while looking great as well.

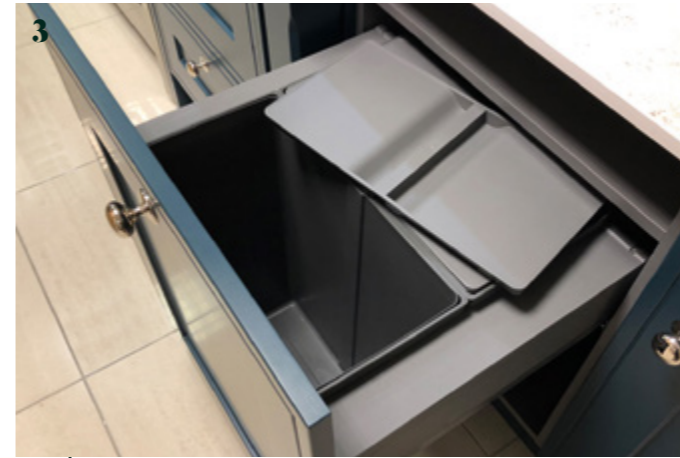
Our cutlery drawers and utensil dividers are expertly designed to provide maximum practicality, with a wide range of stylish options to choose from. Whether you opt for plastic or luxurious oak finish, your retailer will help you decide the perfect combination of trays and dividers, to suit the width of your drawers.

- 1. Oak cutlery drawer inset
- 2. Cutlery inset with foil dispenser, knife block and glass pot accessories



## LINERO MOSAIQ MIDWAY SYSTEM

Supplied conveniently as one handy pack, this midway rail system delivers beautiful form and practical function. With two 600mm rails, shelf, pot (with quiver), two utensil hooks and a kitchen roll holder, your most useful items will always be close at hand.



- 3. Pull-out bin units
- 4. Swing-out removable recycling bins
- 5. Swing-out cylinder waste bin
- 6. Pull-out combi waste bin
- 7. Rectangular waste bin

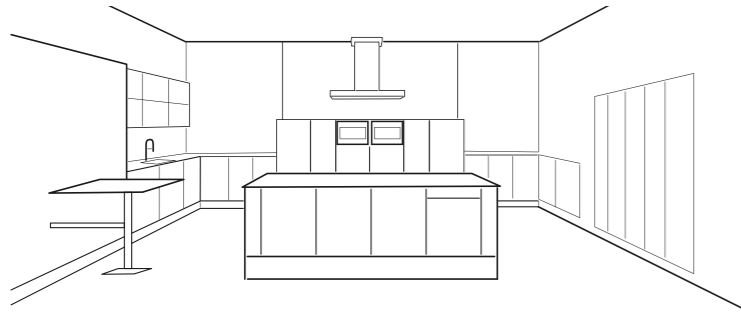


- 8. Removable oak storage boxes and removable oak pegs to keep crockery secure.
- 9. Drip tray
- 10. Pull-out towel rail and tray space





# CLEVER STORAGE



## MAKING YOUR NEW KITCHEN AS FUNCTIONAL AS IT IS ATTRACTIVE

During the kitchen planning process it's useful to imagine not just how you'd like the space to look, but just as importantly, how you typically use your space every day; Where are the pots and pans kept? How easy is it to see the contents at the back of my shelves? Can I actually reach every area of my cabinets, or am I planning wasted space?

All of our kitchens come with the optional addition of Clever Storage products from Kesseböhmer; the best of German engineering that means your new kitchen design won't just look great, but will make time spent unpacking shopping, preparing meals, and tidying up both quick and easy.



1. DISPENSA - Remarkably tidy storage space. The trays can be individually hung at heights to suit the contents, making DISPENSA a flexible solution providing a lot of storage with a very small footprint.
2. DISPENSA - SWING This supply cabinet that's really got that swing. When it is fully pulled out, it can be rotated 90° on its own axis so that either side can be turned to the front as required.
3. DISPENSA - JUNIOR Wave goodbye to waste. Slim base cabinets are notorious places for food which stays hidden until it's no longer edible. The DISPENSA Junior allows for instant visibility and access to all areas of the unit in one motion.
4. CONVOY - PREMIO creates an emotional connection when you open or close it: The contents glide out of the cupboard, moving directly towards you so that you can reach them from three sides. With CONVOY Premio stocking up on food becomes a real adventure.

Products are available in both matt silver and anthracite.



5. IMOVE - The intelligent pull-down system for wall units. Having wall units in your new design doesn't have to mean balancing on a chair or keeping a step stool handy; the iMove allows for easy accessibility to difficult to reach spaces, meaning wall cabinets can be fully utilised by everyone in the household.

6. LEMANS - Easy Accessibility is just around the corner. If you're planning an "L" or "U" shaped kitchen then you will need to tackle the tricky corner space which will otherwise be wasted. With height adjustable trays that each pull completely out of the cabinet individually and boast a market leading weight and size capacity, the Kesseböhmer LeMans is the world's best-selling corner solution.



reddot design award

Experience the design every time you reach for a pot or pan with the LeMans Corner Storage system, awarded the Red Dot Design for outstanding design achievements.

7. NO. 15 - Extra storage space and functionality. With the right fitting, narrow gaps can provide a surprising amount of storage space and functionality.

8. TANDEM SOLO - The characteristic opening experience. One gentle pull opens the door and draws the fitting forward so that all the contents are in full view and easy reach.

9. TANDEM ACCESS ALL AREAS - No other solution gives you the same level of visibility and accessibility of your groceries. The Tandem Larder allows for storage of a whole week's worth of groceries in just one unit; so don't waste time searching through individual drawers, and don't waste money losing food at the back of your shelves until its past its best

Products are available in both matt silver and anthracite.





# PLANNING

As exciting as designing your kitchen can be, it's still an investment that needs care and consideration. Proper planning can result in a more functional, enjoyable space that stands the test of time.

Our trusted retailers are on hand to guide you through the process, but here's five things to think about before you begin.

## 1 LAYOUT

Take a look at your existing kitchen. How could the space be better used? Do any walls need to be knocked through? Take measurements wall-to-wall and come up with as accurate a floor plan as possible. Think about the appliances and features you'd like to include and how to arrange them, then bring your plans to one of our expert retailers.

## 3 DOORS & WORKTOPS

Here's where the fun starts. Take a look at our extensive range of door styles, worktops and paint options. Experiment with texture and pattern, perhaps even contrast door colours between base and wall cabinets. Just remember to enjoy the process – play around and find what works for you.

## 2 EXPERTISE

A specialist will go through your plans with you and make sure you haven't overlooked anything. The last thing you want is doors knocking into each other, or areas of restricted movement. Less is more – prioritise space over features.

## 4 STORAGE SOLUTIONS

We do storage differently. From our world of customisable organisation options to cutting-edge innovations from Kesseböhmer, including the award winning LeMans corner system – we make sure that even the most limited storage space is used optimally. Meaning your sides are always clear, and everything is where you want it to be.

## 5 FINISHING TOUCHES

Time to choose your door handles (unless you've gone handleless), sink and taps, lighting, drawers and design features. You can even start getting inspired about accessories – see our Instagram – but once you're happy with all of your choices, let our retailer know and we can start the ball rolling.



# FAQS

**?** You're bound to have some questions. To help you out, we thought that we'd answer some of the more frequently asked ones. If your specific question isn't covered below, please just contact your approved Sheraton retailer who will be sure to assist.

## Where can I see displays of Sheraton kitchens?

Just visit your local Sheraton retailer to see a selection of our displays and a full set of doors. To fully appreciate the quality our kitchens it's always better to see them in person.

Find your nearest Sheraton retailer at [sheratonkitchens.co.uk/find-a-retailer](http://sheratonkitchens.co.uk/find-a-retailer)

## What's the difference between a true rigid cabinet and a flat-pack assembled cabinet?

All Sheraton kitchen units are true rigid cabinets. They are assembled by skilled craftsmen in our factory, using the very latest technology. The difference between the two cabinets is that true rigid units are assembled using glue and dowel, rather than cam and dowel. This ensures a better overall finish as there are no visible fixings or redundant drill holes. All of our units have door, drawers and accessories pre-fitted.

## Can I buy direct from Sheraton?

Sheraton kitchens are manufactured Omega PLC and are only available via specialist retailers. This is to ensure specific knowledge is used to produce your ideal kitchen.

## How long will it take me to receive my Sheraton kitchen?

Sheraton kitchens will be delivered within 3 weeks from the order being placed by the retailer. Painted kitchens are available within 4 weeks from order placement.

## What happens if I pay a deposit to a retailer for a Sheraton kitchen and they cease trading before my kitchen is delivered?

This is unlikely, but we do run a Deposit Guarantee Scheme. This ensures that you'll still get your Sheraton kitchen furniture at the current manufacturer's recommended retail price list, less the deposit paid on furniture. This is under the proviso that the amount paid to the dealer doesn't exceed 50% of the manufacturer's recommended retail price.

## Do your kitchens carry a guarantee?

All Sheraton kitchens come with a 20 year guarantee on all cabinets, hinges and drawer boxes; a 15 year guarantee on doors and selected accessories. All products manufactured or supplied by Omega PLC will be free from defects in material and workmanship for the full duration of the guarantee, or else be replaced or repaired (at our discretion) free of charge. Subject to terms and conditions. Please see [omegaplc.co.uk](http://omegaplc.co.uk) for full details.

## Do you charge for delivery?

All of our kitchens are delivered FREE\* direct to your home and our two-man teams ensure your new kitchen is delivered with care and professionalism.

## Are you KBSA accredited and what does that mean for me?

Yes, Sheraton kitchens are KBSA accredited and dedicated to upholding the Association's high standards of design, supply, installation and customer service. All members follow an approved Code of Conduct and are subject to strict monitoring to make sure you get the best professional service available. For further information please visit [kbsa.org.uk](http://kbsa.org.uk)



AUTOGRAPH PAINTED BLUSH & INDIGO BLUE	78
BELLATO GREY	120
BROAD STYLE IVORY	44
CHAMFERED SHAKER PAINTED IVORY	40
CHARACTER PAINTED CASHMERE	64
CRYSTAL	
Crystal Gloss Ivory	118
Crystal Gloss Limestone	116
CUBE	84
EDWARDIAN PAINTED LIGHT GREY	58
ELEGANT PAINTED LIGHT GREY	32
EMBOSSSED IVORY & TRUFFLE	114
FLUTE IVORY	56
GLOSS STONE SHAKER	41
HARMONY IN-FRAME SHAKER INDIGO BLUE, SKY & SLATE	50
IN-LINE	
In-Line Gloss Anthracite	93
In-Line Gloss Cashmere	88
In-Line Gloss Grey	94
In-Line Gloss Ivory	95
In-Line Gloss Light Grey	86
In-Line Gloss Limestone	92
In-Line Gloss White	90
In-Line Painted Ivory & Sage Grey	96
In-Line Shaker Gloss White	34
Ivory Shaker	28
INSET CUBE	
Inset Cube Copper & Dusk grey	132
Inset Cube Dark Blue & Woodgrain New England Oak	134
INSET MATTONELLA GLOSS WHITE	138
INSET SETOSA PAINTED	
Inset Setosa Sage Grey & Woodgrain Atrium Grey	136
Inset Setosa Limestone & Anthracite	140
LISSA OAK	
Lissa Oak Shaker	45
Lissa Oak Wood Shaker	43
LUSTRE METALLIC & CUBE FJORD	82
MANOR HOUSE PAINTED HEATHER, SLATE AND LIGHT GREY	54
MATTONELLA	
Mattonella Gloss Cashmere	102
Mattonella Gloss Light Grey	100
Mattonella Gloss White	104
MINSTER PAINTED GRAPHITE & SLATE	60
NOUVEAU	
Nouveau Painted Turquoise & Light Blue	20
Nouveau White & Light Grey	24
OBLIQUE PAINTED BLUSH & GRAPHITE	128
OBLIQUE GLOSS WHITE	130
PAINTED WOOD SHAKER IVORY & HICKORY	38
IN-FRAME PAINTED LIGHT BLUE & WHITE	68
REGENT IVORY	69
SAND OAK	
Sand Oak Shaker	45
Sand Oak Timber Shaker	42
SATIN WHITE	121
SAVOY PAINTED LIMESTONE & ANTHRACITE	30
SETOSA PAINTED IVORY & GREEN	106
SHAKER PAINTED SAGE GREY & IVORY	26
WOOD FRAMED IVORY PAINTED	66
WOODGRAIN	
Woodgrain Gladstone Oak	113
Woodgrain Sand Oak	110
Woodgrain White Oak	108
OPTIONS & ACCESSORIES	
Door Collection	146
Colour Palette	150
Cabinet Specification	154
Drawers	156
Handle Options	158
Sinks & Taps	160
Worktops	162
Lighting	166
Design Features	170
Organisation	174
Clever Storage	176
Planning	180
FAQs	182
Index	183
Kitchen Specifications	184

\*Minimum order value applies.





# KITCHEN SPECIFICATIONS

## PRICE GROUP 0A

Range Name	Door Material	Lead Time	Curved Units	Available on Inset?
Bellato Grey	Laminated MFC	3 weeks	No	Yes
Cube (All doors)	Laminated MFC	3 weeks	No	Yes
Woodgrain Bardolino Oak (Horizontal and Vertical)	Laminated MFC	3 weeks	No	Yes
Woodgrain Brown Grey Avola	Laminated MFC	3 weeks	No	Yes
Woodgrain Driftwood	Laminated MFC	3 weeks	No	Yes
Woodgrain Lissa Oak	Laminated MFC	3 weeks	No	Yes
Woodgrain Nebraska Oak (Horizontal and Vertical)	Laminated MFC	3 weeks	No	Yes
Woodgrain Sand Oak	Laminated MFC	3 weeks	No	Yes
Woodgrain White Avola	Laminated MFC	3 weeks	No	Yes

## PRICE GROUP 0B

Cube Copper	Laminated MFC	3 weeks	No	Yes
Woodgrain Gladstone Oak	Laminated MFC	3 weeks	No	Yes
Woodgrain Atrium Grey (Horizontal and Vertical)	Laminated MFC	3 weeks	No	Yes
Woodgrain New England Oak (Horizontal and Vertical)	Laminated MFC	3 weeks	No	Yes
Woodgrain White Oak (Horizontal and Vertical)	Laminated MFC	3 weeks	No	Yes
Crystal (All doors)	Laminated MFC	3 weeks	No	Yes
Embossed (All doors)	Laminated MFC	3 weeks	No	Yes

## PRICE GROUP 1

Broadstyle Ivory	PVC Wrapped MDF	3 weeks	Yes	No
Flute Ivory	PVC Wrapped MDF	3 weeks	No	No
Ivory Shaker	Foil Wrapped MDF	3 weeks	Yes	No
Nouveau (All doors)	PVC Wrapped MDF	3 weeks	No	No
Regent Ivory	PVC Wrapped MDF	3 weeks	No	No
Satin White Slab	PVC Wrapped MDF	3 weeks	Yes	Yes
Shaker Lissa Oak Foil	Foil Wrapped MDF	3 weeks	Yes	No
Shaker Sand Oak Foil	Foil Wrapped MDF	3 weeks	Yes	No

## PRICE GROUP 2

Mattonella Gloss (All doors)	PVC Wrapped MDF	3 weeks	Yes	Yes
Minster	PVC Wrapped MDF	3 weeks	No	No
Nouveau Painted	Painted PVC Wrapped MDF	4 weeks	No	No
Oblique Gloss White	Gloss Lacquered MDF	3 weeks	No	Yes
Oblique Painted	Painted MDF	4 weeks	No	Yes
Shaker Painted	Painted Foil Wrapped MDF	4 weeks	Yes	No
Setosa Painted	Painted MDF	4 weeks	Yes	Yes

## PRICE GROUP 3

Autograph Painted	Painted MDF	4 weeks	No	No
Edwardian Painted	Painted MDF	4 weeks	Yes	No
Elegant Painted	Painted MDF	4 weeks	Yes	No
Gloss Stone Shaker	PVC Wrapped MDF	3 weeks	Yes	No
In-Line Gloss (All doors)	Lacquered MDF	3 weeks	Yes	No
In-Line Painted	Painted MDF	4 weeks	Yes	No
Lustre Metallic	Gloss UV Lacquered MDF	3 weeks	No	Yes
Minster Painted	Painted PVC Wrapped MDF	4 weeks	No	No
Painted In-Frame	Painted Foil Wrapped MDF	4 weeks	Yes	No
Savoy Painted	Painted MDF	4 weeks	No	No

## PRICE GROUP 4

In-Line Shaker Gloss White	Lacquered MDF	3 weeks	Yes	No
Lissa Oak Wood Shaker	Solid Oak Frame with Veneered Centre Panel	3 weeks	Yes	No
Sand Oak Wood Shaker	Solid Oak Frame with Veneered Centre Panel	3 weeks	Yes	No

## PRICE GROUP 5

Chamfered Shaker Painted	Painted Solid Ash Frame with Veneered Centre Panel	4 weeks	Yes	No
Character Painted	Painted Solid Ash Frame with Veneered Centre Panel	4 weeks	Yes	No
Manor House Painted	Painted Solid Ash Frame with Beaded Veneered Centre Panel	4 weeks	Yes	No
Painted Wood Shaker	Painted Solid Ash Frame with Veneered Centre Panel	4 weeks	Yes	No
Harmony Painted	Painted MDF	4 weeks	Yes	No
Wood Framed Painted	Painted Solid Ash Frame with Veneered Centre Panel	4 weeks	Yes	No





SHERATON®